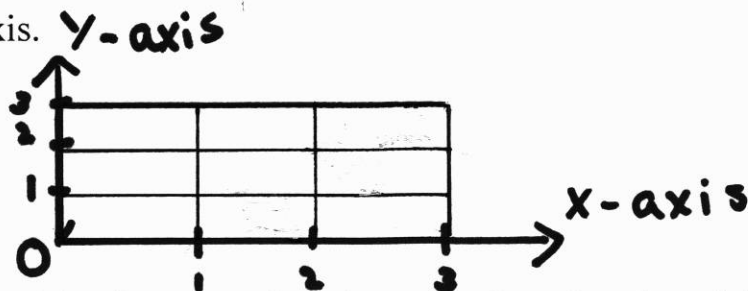


Exploring Grids and Coordinates

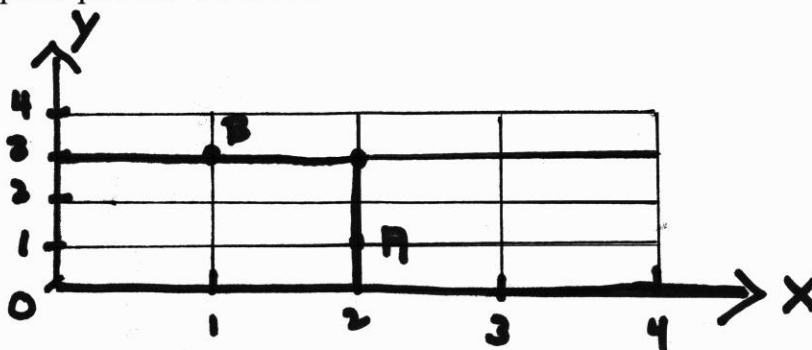
Introduction:

Look at the drawing below you. This is called a coordinate plane or grid. The dark lines are the x and y axis. Where the perpendicular lines meet is called the origin. The dark horizontal line is called the x-axis and the dark vertical line is called the y-axis.



The axes (plural) are numbered starting from 0 at the origin. When you have one number from each axis, it is easy to find or plot the point on the grid. We call these number coordinates or coordinate pairs. The two numbers needed to plot a point on the grid are called an ordered pair. Here is an example of an ordered pair; (2, 3).

Below is an example of the coordinate pair (2, 3). The first number gives the position of the point on the x-axis and the second number gives the position of the number on the y-axis. Look at the point (2, 3) on the graph below. Notice how you find the x coordinate first and then go up on the y coordinate until you find the point (2, 3). Can you find the coordinate point for A and B. Write the coordinate pair down in the space provided below.



Point A _____ Point B _____