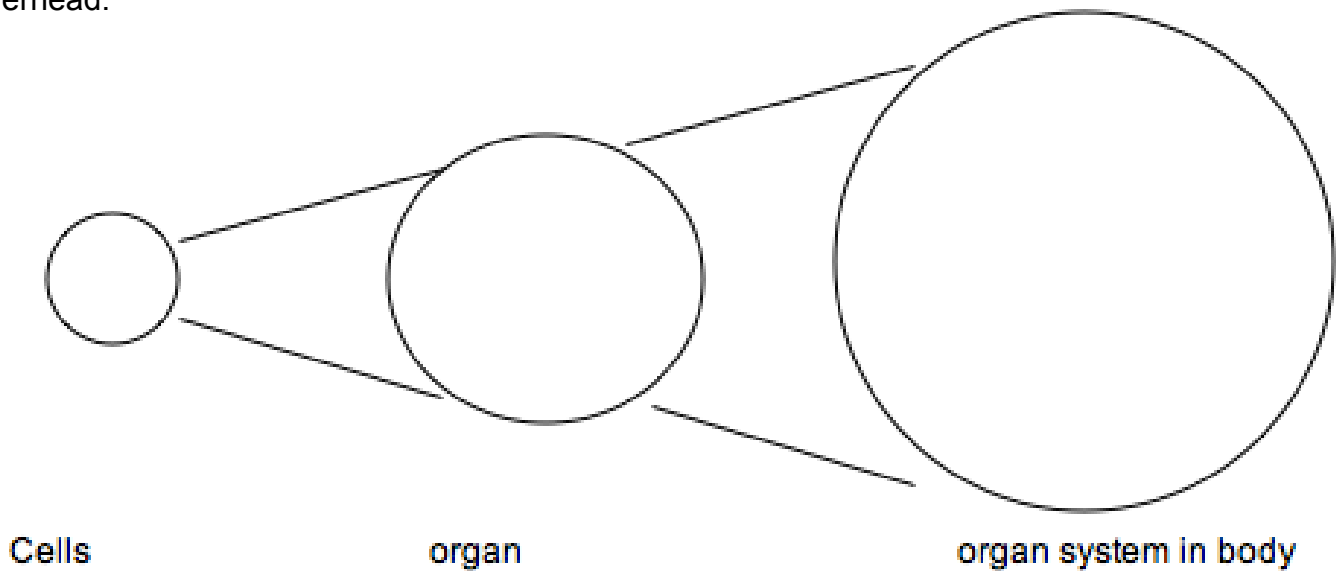


Overhead:



---

Systems to choose from:

- heart - muscle tissue, valves and chambers
- lung - trachea, bronchial, alveoli
- leaf - veins, stomata
- stem - xylem, phloem, cambium;
- root - tip, elongation, hairs;
- skin - layers, sweat glands, oil glands, hair follicles
- ovaries - ova, follicles, corpus luteum
- small intestine-villi, pyloric valve
- kidney-nephron, ureter
- bone-compact bone, spongy bone, periosteum, marrow
- liver-lobes, gall bladder
- Stomach-rugae, stomach wall
- Flower-petals, ovary, stamen, pistil
- Brain-cerebrum, cerebellum, medulla
- Muscle-fiber, tendon,
- Knee-patella, bursa, ligament, cartilage
- Spinal cord-vertebra, disc, spinal nerves