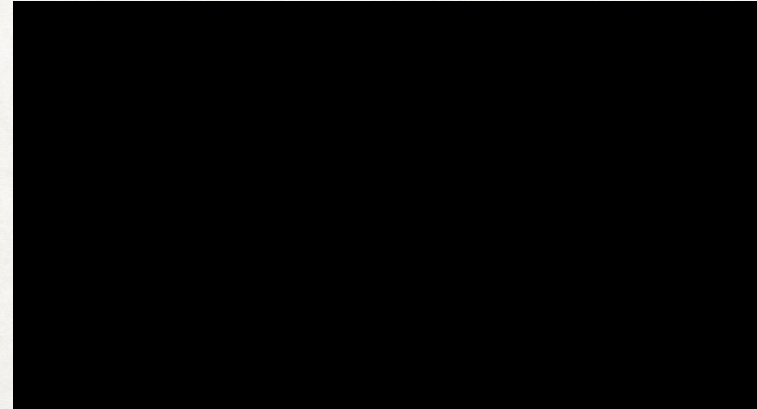


ASSESSING BEYOND THE BUBBLE SHEET

VIDEO CLIP

HOW OUR STUDENTS FEEL:



WHAT IS ASSESSMENT?

DEFINE

- What does assessment mean to you?
- According to the University of Connecticut:
 - Assessment involves the use of empirical data on student learning to refine programs and improve student learning
 - Assessment is the process of gathering and discussing information from multiple and diverse sources in order to develop a deep understanding of what students know, understand, and can do with their knowledge as a result of their educational experiences; the process culminates when assessment results are used to improve subsequent learning.

WHY DO WE ASSESS?

REVIEW

- "Assessment is essential not only to guide the development of individual students but also to monitor and continuously improve the quality of programs, inform prospective students and their parents, and provide evidence of accountability to those who pay our way."

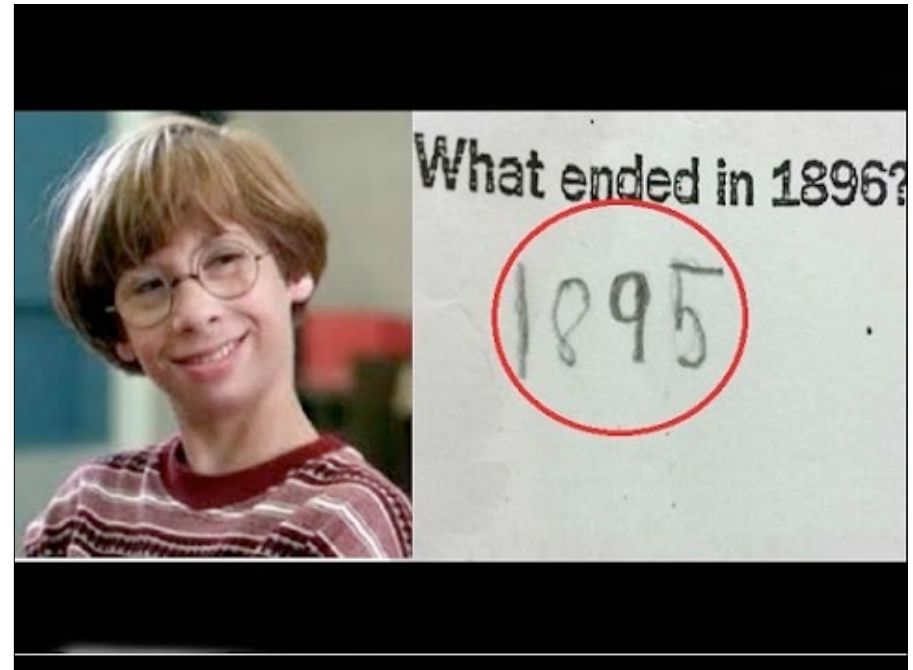
Redesigning Higher Education: Producing Dramatic Gains in Student Learning by
Lion F. Gardiner; ASHE-ERIC Higher Education Report Volume 23, No. 7, p. 109



WHY DO WE ASSESS?

REVIEW

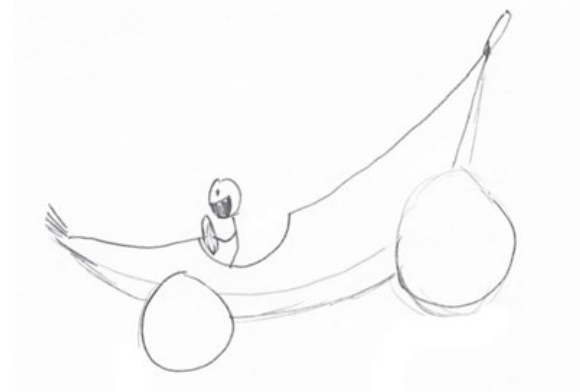
- "People tend to learn most effectively (in ways that make a sustained, substantial, and positive influence on the way they think, act, or feel) when
 - they are trying to solve problems (intellectual, physical, artistic, practical, abstract, etc.) or create something new that they find intriguing, beautiful, and/or important;
 - they are able to do so in a challenging yet supportive environment in which they can feel a sense of control over their own education;
 - they can work collaboratively with other learners to grapple with the problems;
 - they believe that their work will be considered fairly and honestly; and
 - they can try, fail, and receive feedback from expert learners in advance of and separate from any summative judgment of their efforts." – Ken Bain 2004



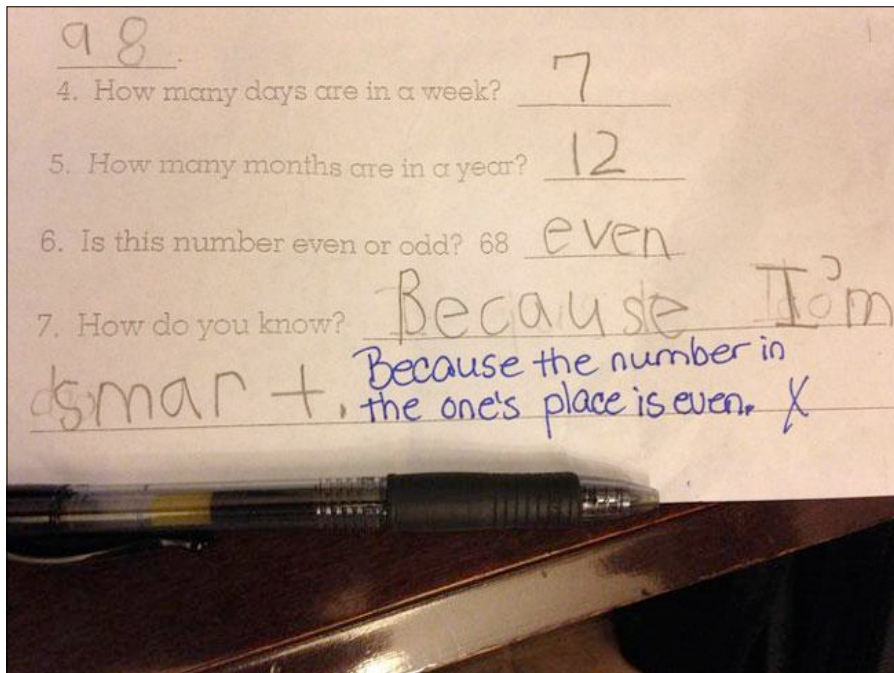
~~1.~~ why are there rings on Saturn?

Because God liked it, so he
put a ring on it. Saturn was
NOT a single
body.

BANANA CAR
Construct a ~~rectangle~~ with sides Y and ends Z



I want to retake this this test.



TYPES OF ASSESSMENTS

NOT INCLUSIVE, BUT MOST COMMON

- Pre-Assessment
- Formative Assessment
- Summative Assessment

PRE-ASSESSMENTS

DEFINE

- What are pre-assessments?
- How are they useful to our classrooms?
- Since new knowledge and skill is dependent on pre-existing knowledge and skill, knowing what students know and can do when they come into the classroom or before they begin a new topic of study, can help us craft instructional activities that build off of student strengths and acknowledge and address their weaknesses...assessing prior knowledge can enable both the instructor and the student to allocate their time and energies in ways that will be most productive.

PRE-ASSESSMENT EXAMPLES

APPLICATION

contractions quiz!

name: _____ date: _____

1. can + not = _____

2. do + _____ = don't

3. _____ + not = shouldn't

4. had + not = _____

5. _____ + not = couldn't

6. are + not = _____

Topic: _____ Name: _____

K What I Know	W What I Wonder	L What I Learned

4 CORNERS
A kinesthetic Preassessment

THINK PAIR SHARE

NEVER HAVE I EVER

FORMATIVE ASSESSMENTS

DEFINE

- What are formative assessments?
- "Formative tests are given during the formative, developmental, or teachable period when the student is in the process of mastering an objective. Formative tests are used to determine what remediation is needed for a student to master the content, skill, or objective." - Harry Wong
- How are they useful to our classrooms?
- "If you are not routinely checking for understanding then you are not in touch with your students' learning."

FORMATIVE ASSESSMENT EXAMPLES

APPLICATION



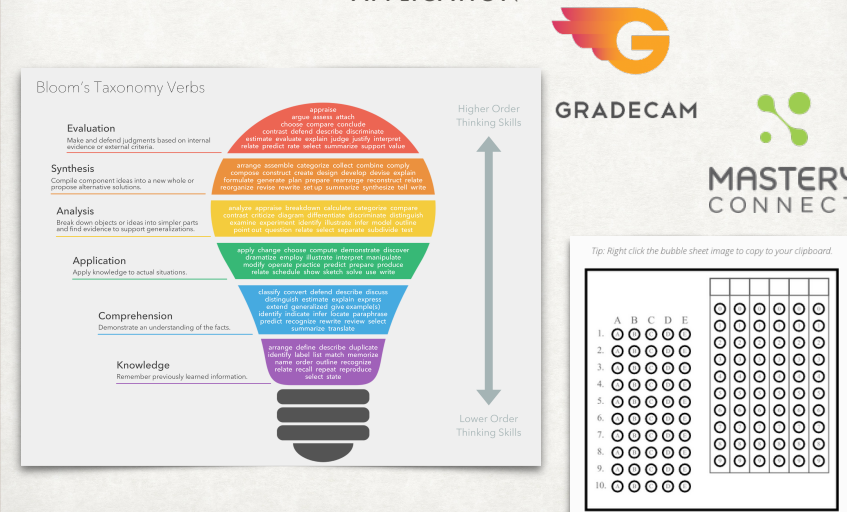
SUMMATIVE ASSESSMENTS

DEFINE

- What are summative assessments?
- "Summative tests are given at the end of a unit when you want not sum up what the student has learned, and then to determine a grade." - Harry Wong
- How are they useful to our classrooms?
- "The effective teacher test and corrects, test and corrects, because the teacher wants all the students to achieve." -Harry Wong.

SUMMATIVE ASSESSMENT EXAMPLES

APPLICATION



WORKS CITED

READ MORE ABOUT IT

- Alber, Rebecca. "Why Formative Assessments Matter." Edutopia. N.p., 15 Feb. 2011. Web. 18 May 2016. <<http://www.edutopia.org/blog/formative-assessments-importance-of-rebecca-alber>>.
- "Assessing Prior Knowledge." N.p., n.d. Web. 15 May 2016. <<https://www.cmu.edu/teaching/designteach/teach/priorknowledge.html>>.
- pinterest.com
- UCON Assessment. University of Connecticut, n.d. Web. 15 May 2016. <<http://assessment.uconn.edu/>>.
- Wong, Harry K., Rosemary T. Wong, and Chelonnda Seroyer. "Do You Grade All Tests?" *The First Days of School: How to Be an Effective Teacher*. Mountain View, CA: Harry K. Wong Publications, 2009. 256-57. Print.