



Ally Implementation Kick-Off

Utah Education Network

Blackboard

Agenda

Welcome & Introductions

Blackboard Team and roles

Utah Education Network Introductions

Team and roles

Ally Implementation Process

Steps, timeline and strategy, support

Next Steps and Q&A

Welcome and Introductions

Brandi Johnson
Project Manager

Corey Ray
Technical Consultant

Zach Adda
Sr. Technical Consultant

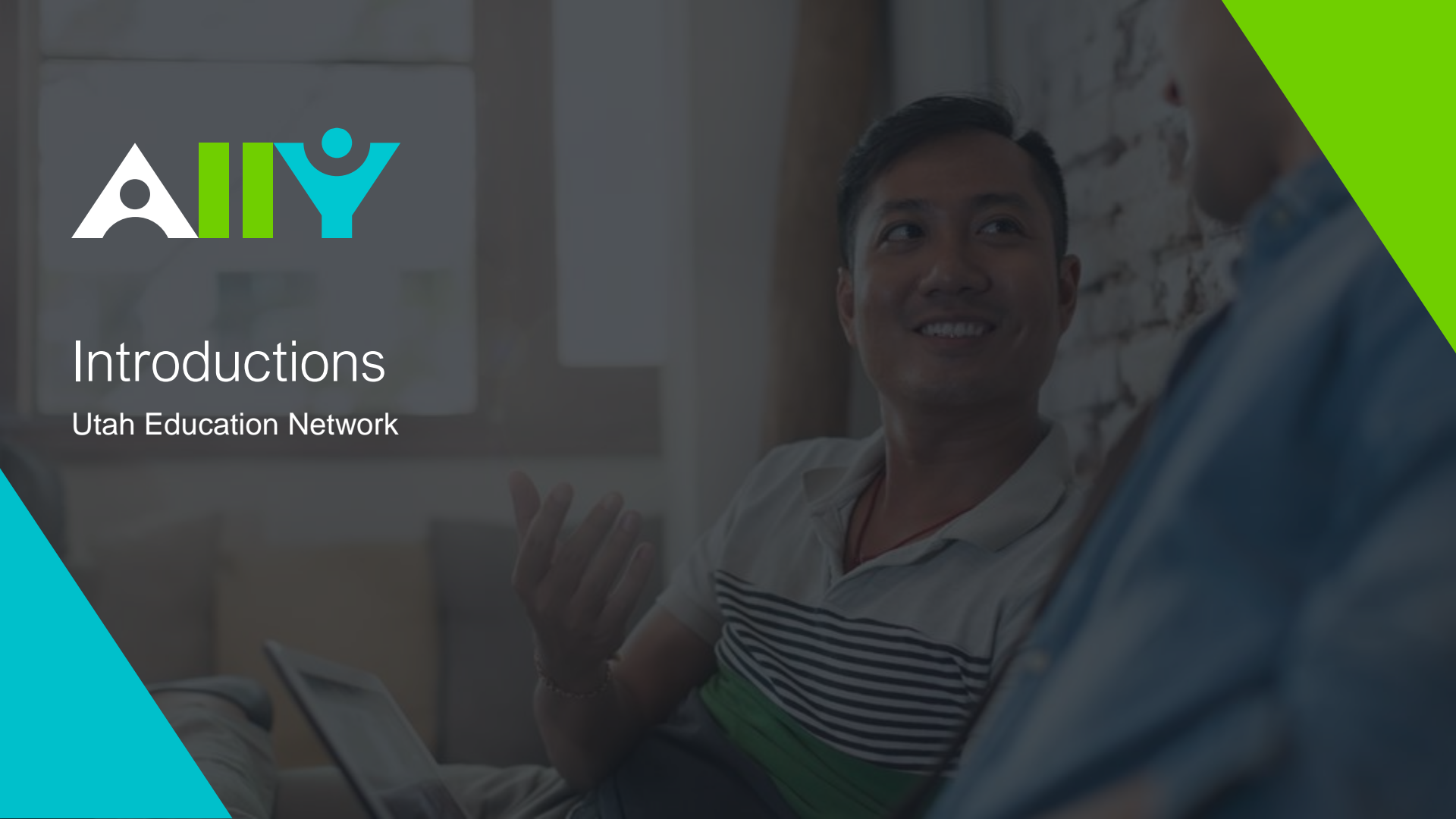
Nicolaas Matthijs
Ally Product Manager

Justin Coquillard (J.C.)
Account Executive



Introductions

Utah Education Network



Ally Implementation Process



Kick-off call

Discuss timeline and roll-out strategy



Technical Integration

- API token setup and communication
- Live Events configuration
- Ally user interface configuration



Ally Overview Training Session

Provides a detailed overview of Ally's features and the integration into your LMS



Institutional Report Training Session

Provides an in-depth review of your institutional report data

Ally Instructor Training



Remote Training-Delivered in Blackboard Collaborate

Level 1 - This workshop lasts three hours, and may be delivered in 1 three-hour or two 1.5-hour Blackboard Collaborate sessions.

Level 2 - This workshop is delivered using Blackboard Collaborate in one 1.5-hour session.



Workshop Content

Level 1. Using Blackboard Ally to Create and Maintain Accessible Online Resources

Designed to provide a thorough introduction to the concept of accessibility, this robust synchronous course offers an in-depth look at accessibility issues and solutions in online learning. Participants will explore crucial barriers to accessibility, and experience first-hand how assistive technologies enable learners with disabilities to take full advantage of educational materials.

Level 2. Using Blackboard Ally to Enhance Accessibility

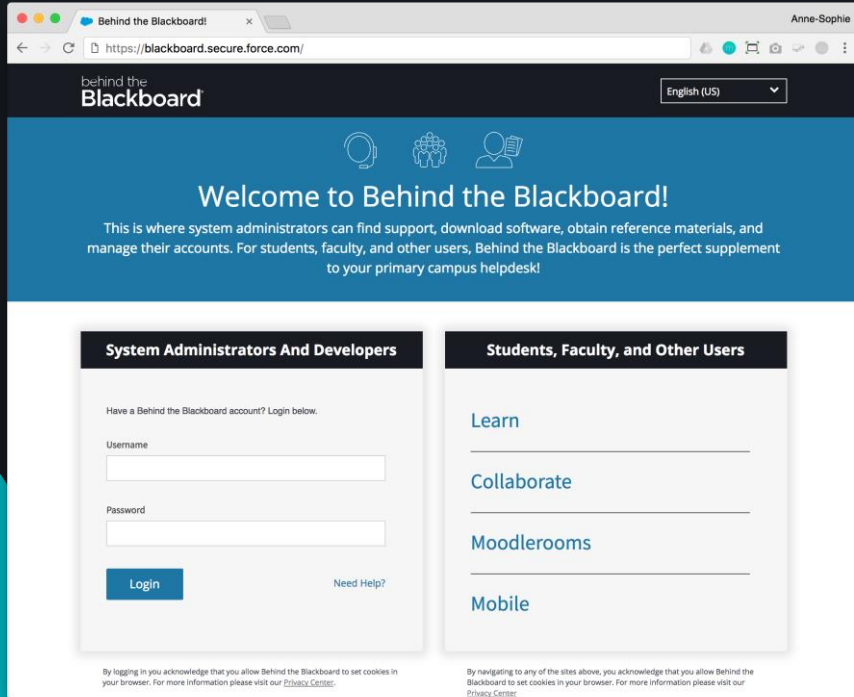
Designed with the experienced user in mind, this more streamlined and compact course takes a higher-level overview of accessibility issues, and focuses on the benefits provided by Blackboard Ally



Who Should Attend

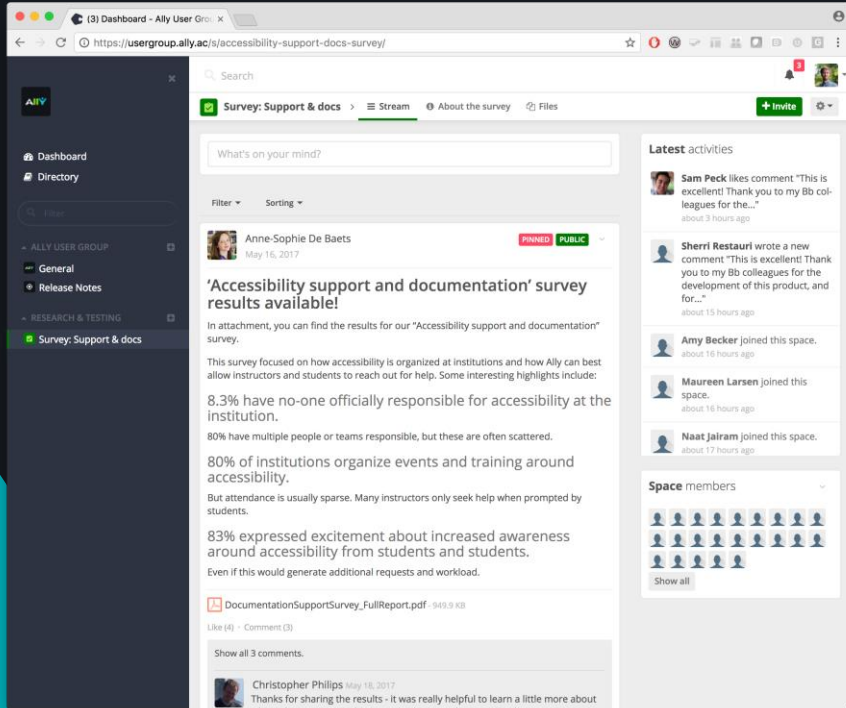
Course instructors, course designers, administrators, and support personnel who wish to learn more about using Ally to support accessibility.

Ally Support



- Your Project Manager is the primary point of contact during the implementation process.
- Once the implementation has been completed, support will be provided through the 'Behind the Blackboard' support portal.

Ally User Group



- Receive updates about Blackboard Ally
- Participate in UX research, usability testing, early access, etc.

Sign up at: <https://usergroup.ally.ac>



Next steps and Q&A



Blackboard®



Making course content accessible