

PLANETS



By Noah Richmond

PLANETS

Written and Illustrated by Noah Richmond

MERCURY

Mercury is the closest planet to the sun. It is 3,032 miles wide. It has no moons. It is 35.98 million miles away from the sun. The average temperature on Mercury is 152 degrees fahrenheit. Mercury is the smallest planet in the solar system.



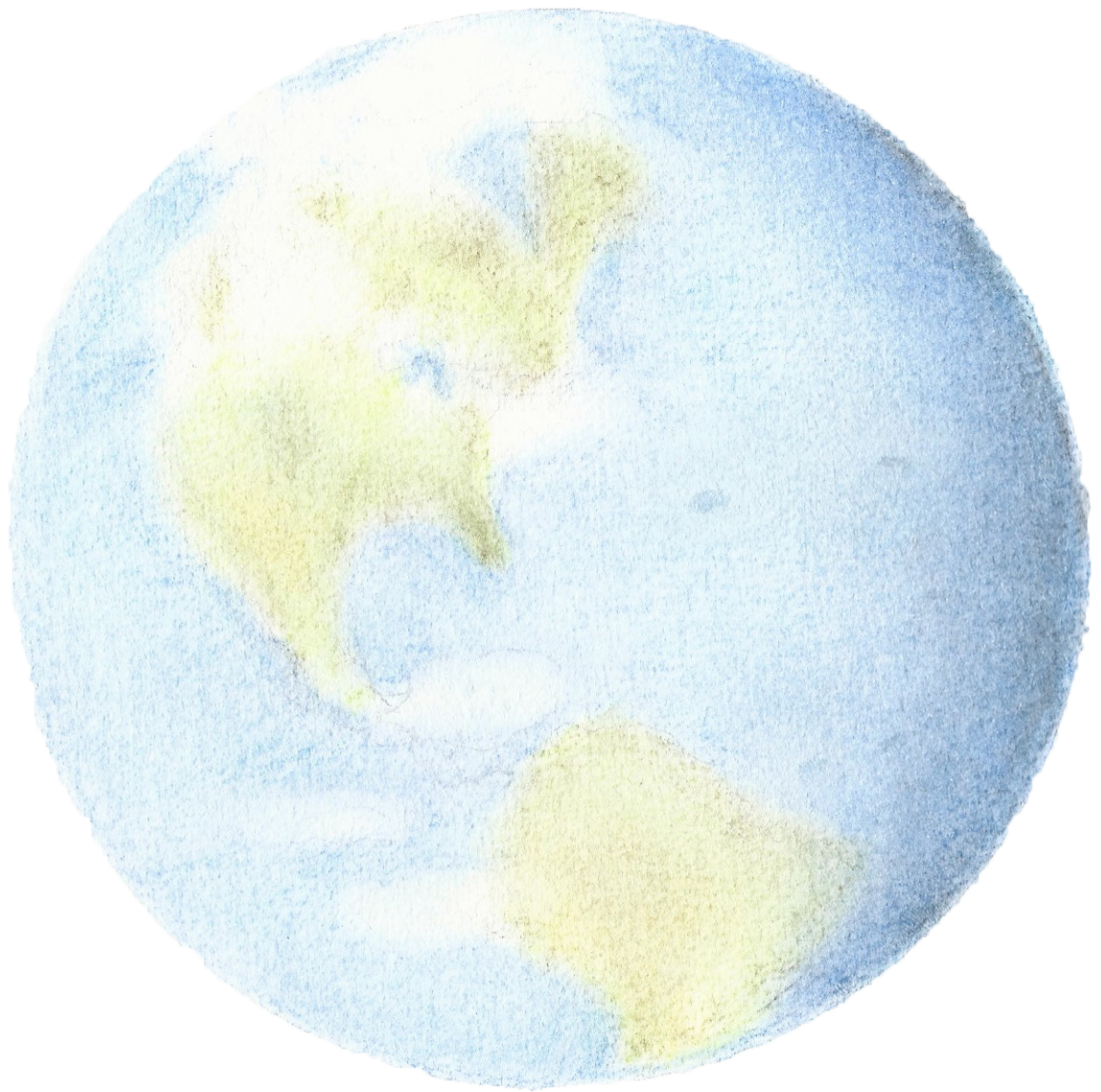
VENUS

Venus is the second planet from the sun. It is 7,520 miles wide. It has no moons. It is 67.24 million miles away from the sun. The average temperature on Venus is 864 degrees fahrenheit. Venus is the hottest planet in the solar system



EARTH

Earth is the third planet from the sun. It is 7,918 miles wide. It has one moon. It is 92.96 million miles away from the sun. The average temperature on Earth is 59 degrees fahrenheit. Earth is the densest planet in the solar system



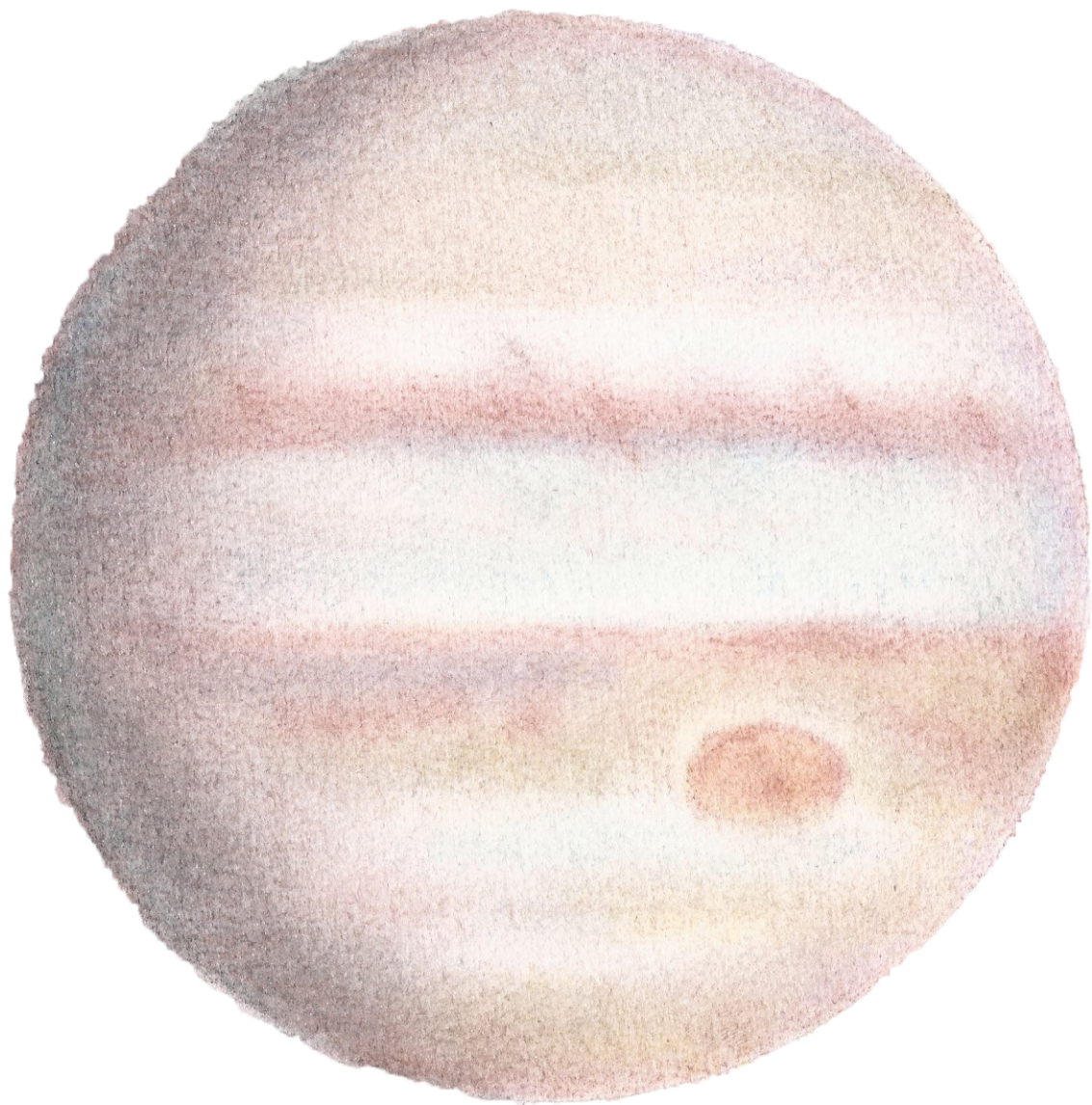
MARS

Mars is the fourth planet from the sun. It is 4,212 miles wide. It has two moons. It is 141.6 million miles away from the sun. The average temperature on Mars is -81 degrees fahrenheit. Mars is red because of the rust on its surface.



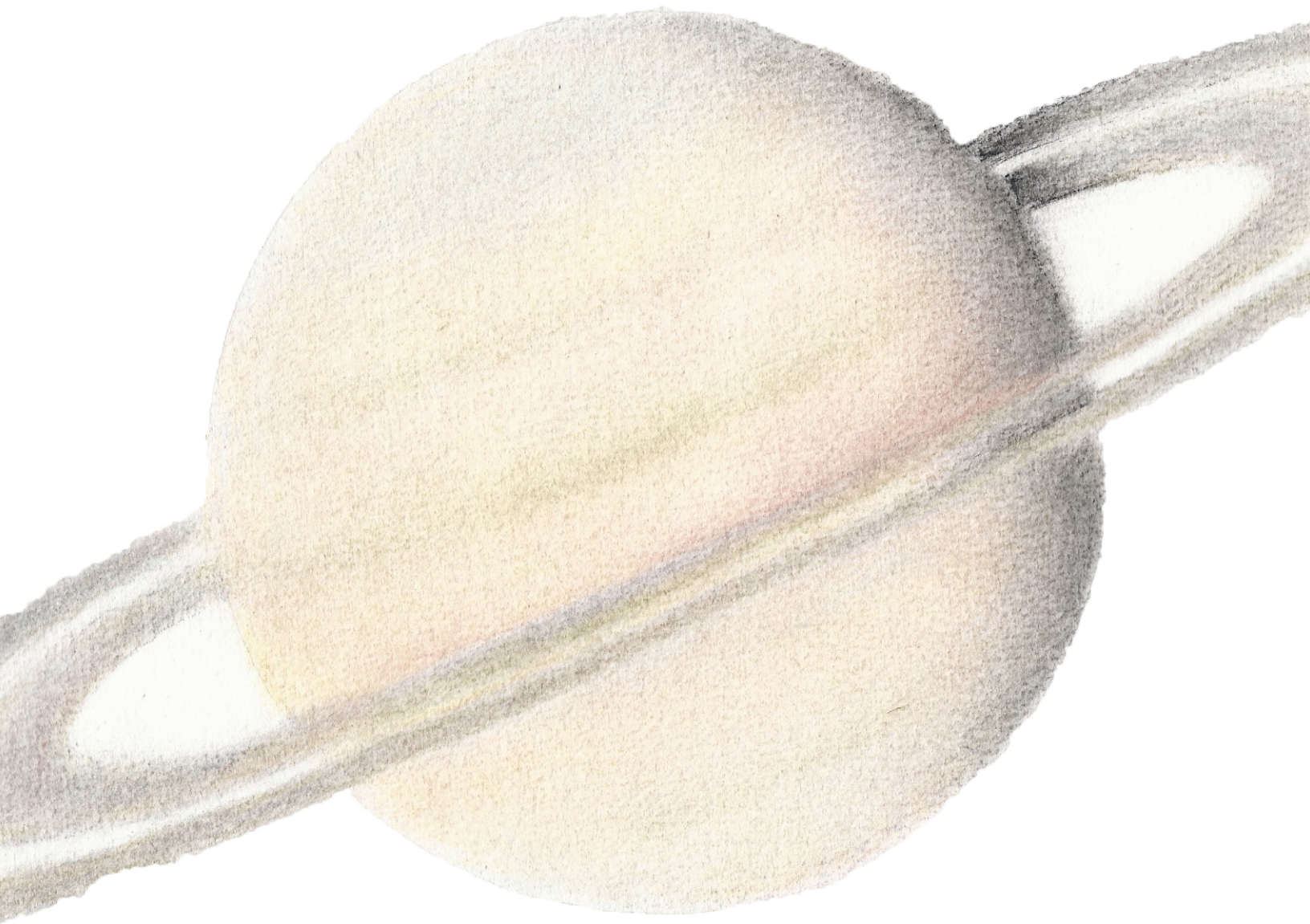
JUPITER

Jupiter is the fifth planet from the sun. It is 86,882 miles wide. It has 67 moons. It is 483.8 million miles from the sun. The average temperature on Jupiter is -162 degrees fahrenheit. Jupiter is the biggest planet in the solar system.



SATURN

Saturn is the sixth planet from the sun. It is 72,368 miles wide. It has 62 moons. It is 890.7 million miles from the sun. The average temperature on Saturn is -218 degrees fahrenheit. Saturn's rings are made of ice, rocks, and dust.



URANUS

Uranus is the seventh planet from the sun. It is 31,518 miles wide. It has 27 moons. It is 1.79 billion miles from the sun. The average temperature on Uranus is -323 degrees fahrenheit. The wind on Uranus can be as fast as 560 mph.



NEPTUNE

Neptune is the eighth planet from the sun. It is 30,598 miles wide. It has 14 moons. It is 2.8 billion miles from the sun. The average temperature on Neptune is -330 degrees fahrenheit. Neptune is the coldest planet.



