

Daggett School District

👤 Active User Overview

Total Number of Students: 161

Number of Students in 7-12: 88



April 2024

April 2025

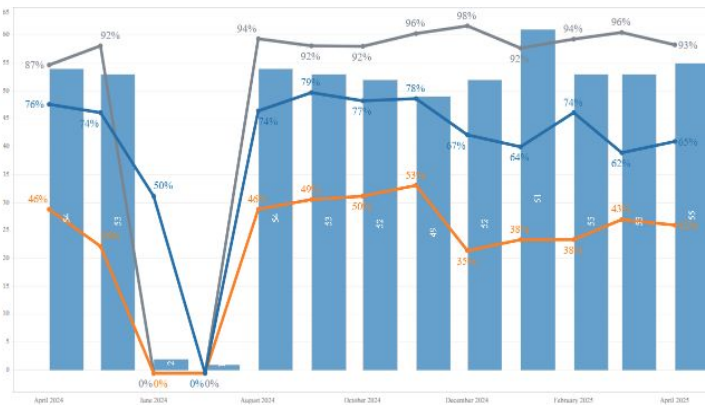
📖 Content & Activity Overview



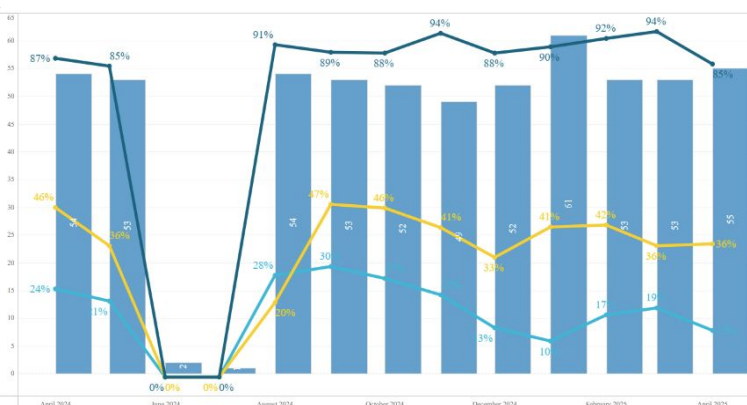
Top LTIs

- Derivita
- Google Assignments
- Google Drive LTI
- Cengage Learning
- HMH

📄 Content Detail



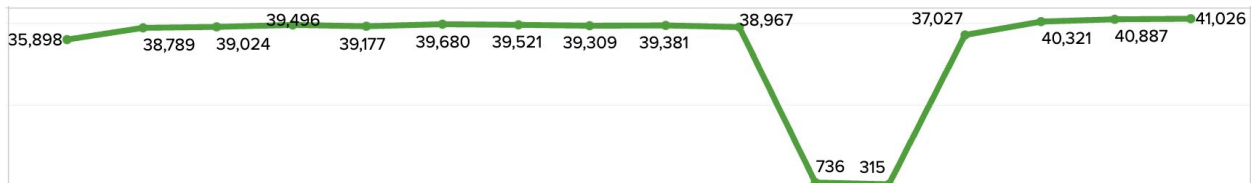
📝 Activity Detail



How To Read Usage Data

Active Users

“Active Users” means enrolled in an active course and logged in at least once in the given month.



Active Courses

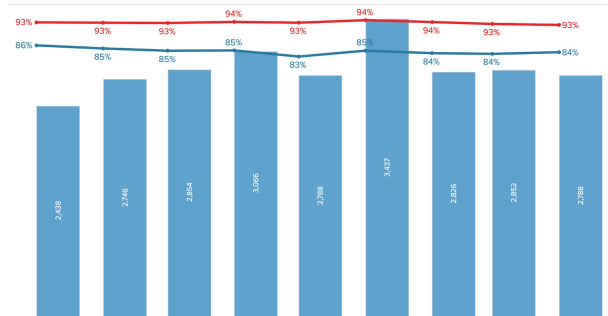
The blue bars in the graphs below represent active courses.

“Active Courses” are defined as courses that meet the following criteria:

- At least one enrolled teacher with recorded activity time
- At least three enrolled students with recorded activity time
- The course includes a defined term or start/end date
- At least four unique user logins within the current month

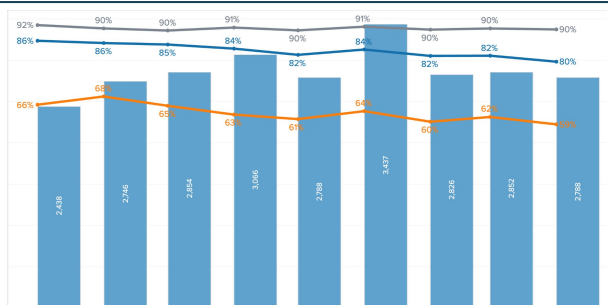
Content & Activity Overview

- % Monthly Active Courses with Activities
- % Monthly Active Courses with Content



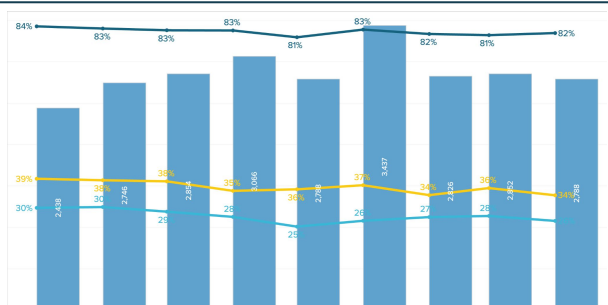
Content Detail

- % Monthly Active Courses with Pages
- % Monthly Active Courses with Files
- % Monthly Active Courses with Modules



Activity Detail

- % Monthly Active Courses with Assignments
- % Monthly Active Courses with Quizzes
- % Monthly Active Courses with Discussions



Note: New Quizzes usage is accounted for in the Assignments line.

How To Read Usage Data

LTI Usage

The top five Learning Tools Interoperability (LTI) tools for each LEA were identified based on total launch counts within their Canvas instance.

Some LEAs used fewer than five LTIs, so only two or three may be listed. In rare cases where no LTI activity was recorded, that is also indicated.

Total Number of Students (K-12) and Number of Unique Users (HED)

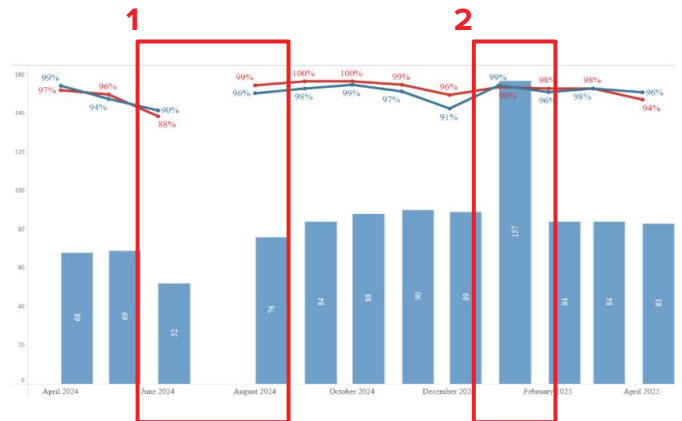
To help contextualize the number of active Canvas users reported in Instructure data dashboards, we've included the total student enrollment for each K–12 LEA, along with the number of secondary students (where applicable), using [publicly available data](#) from the Utah State Board of Education (USBE).

For higher education institutions, we've included the number of unique users, defined as the total count of distinct individuals who have logged into Canvas at least once over the past 12 months.

Seasonal Gaps or Spikes in Data

1: Some graphs show low or missing data during summer months, reflecting a natural drop in Canvas usage when many institutions are not in session.

2: Some spikes in January are expected due to overlapping course start and end dates during that time.



Inconsistent Baselines

In some graphs, bars and lines use different percentage baselines, so their "zero" points may not align visually. When comparing values, focus on actual values rather than visual height for accurate comparisons.

