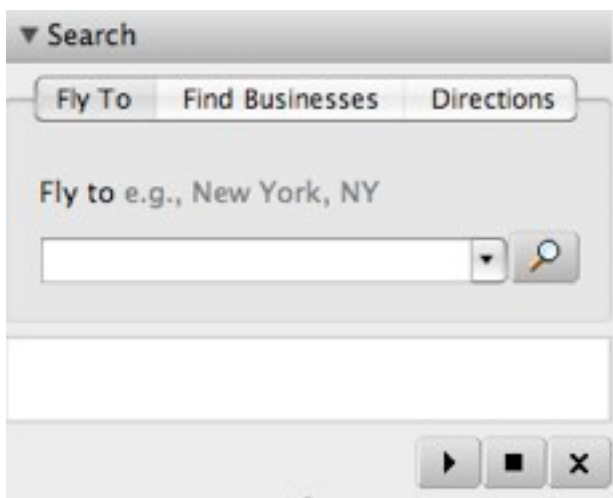
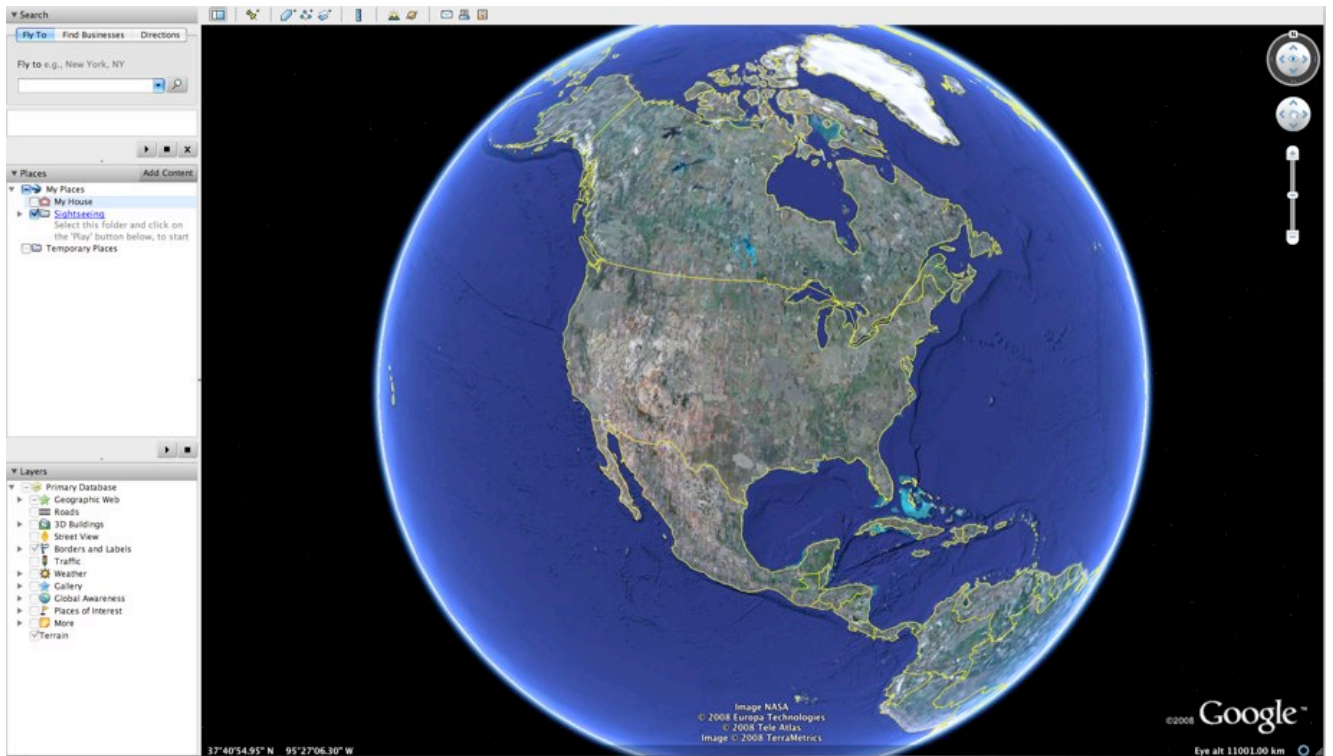




## Google Earth Basics

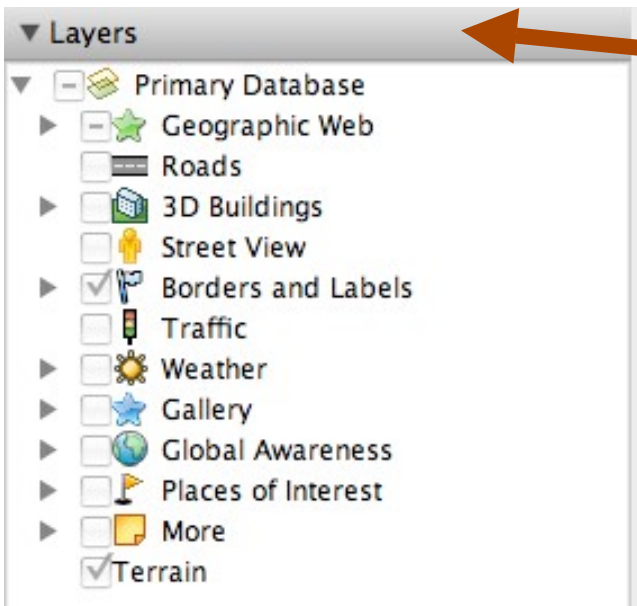
Google helps bring the world to your desktop with Google Earth. This program allows you to search for specific locations and then “zooms in” to bring those areas to life through aerial photography. You can literally take your students all over the world and introduce them to places that aren’t available on a regular atlas.



To get started, simply type in the address you want to find in Google Earth under the “Fly To” tab. You can be as specific as the house number or can simply include the city and state you’d like to explore. Instantly Google Earth zooms into the location you’ve selected as you fly from a global perspective to a local one.



You'll also be able to add markers like "Placemarks" to keep track of some special locations.



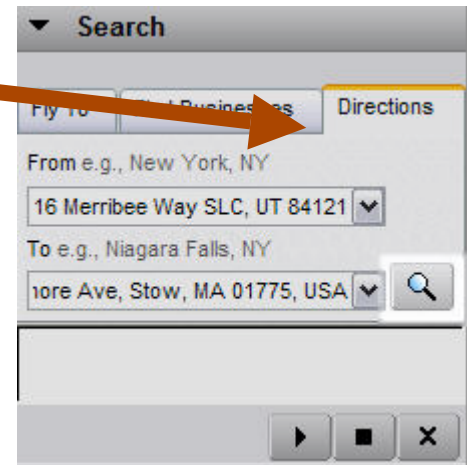
While you're on the local view, you can "turn on" various layers, such as roads.



As you “add placemarks” or your own locations to Google Earth, you can save these locations in *My Places*.

Under the Places tab you’ll also find many world sites under *Sightseeing*.

You can get directions for a specific location by using the “Directions” tab in the Search window. In fact Google Earth will allow you to “take” the journey using a virtual road trip feature when you press the play button..



Once you’ve typed in your starting and ending points, the directions tab provides you with details driving instructions to help you find your way. You can either print these instructions or watch your trip using the virtual tour feature.

## Navigation






To change the current view of the world in Google Earth you'll want to use the navigation tool in the top right corner of your screen. The navigation wheel will allow you to zoom, pan, and tilt the map to give you a different look at your world.

### Basic Uses

1. Use the tilt wheel to tilt the terrain toward a horizon view. Click on the arrows to change your perspective from overhead to the horizon. Click the eye in the center of the wheel to slowly tilt around the map.
2. Use the hand in the center of the direction wheel to slowly pan around the map.
3. Click the direction arrows to move the view in the direction you wish.
4. Click the north up button to reset the view so that north is at the top of the screen.
5. Use the zoom slider to zoom in or out (+ to zoom in, - to zoom out). Click the icons at the end of the slider to reset the zoom all the in or out.
6. Click and drag the navigation ring to rotate the view.

### Other New Features

- **Google Sky:** Located in the top tool bar. Gives you the ability to search the solar system. Check out planets, constellations, stars, and more. 
- **Sunlight:** Located in the top tool bar. Gives you the ability to see an area based the sunrise and sunset. 
- **Google Maps and Street View:** Located in the top tool bar. Allows you to see the same area in the local view from Google Maps. You can also change your view to see the area from the Street View, using 360° photos of the location. 
- **Flight Simulator:** Found under Tools menu. This incredible tool actually allows you into a flight simulator where you're the pilot. Fly a jet across the sky and see the Earth from a new perspective.



## Creating a Placemark/Tour in Google Earth

1. Find the first location for your tour in Google Earth
2. Go to **Add > Placemark** (Ctrl N) to create your first placemark. A pop-up window will appear.
3. While the window is open, make changes to the details of your placemark.
  - A. Move the placemark around the page with your mouse.
  - B. Change the name.
  - C. Click on Advanced to change more properties such as the icon.
4. Give the placemark a name.
5. Add a description.
  - A. To include an image in your description you'll need to know the url and one piece of html code. To insert the image type `` For example ``. You'll want to select an image small enough to fit within the description window.
  - B. To include a link in your description type `<a href="url goes here">text</a>` For example `<a href="http:www.uen.org">UEN</a>`.
6. Create a new folder for the tour by clicking on **Add > New Folder**.
7. Browse to the next location in your tour and repeat steps 2-4

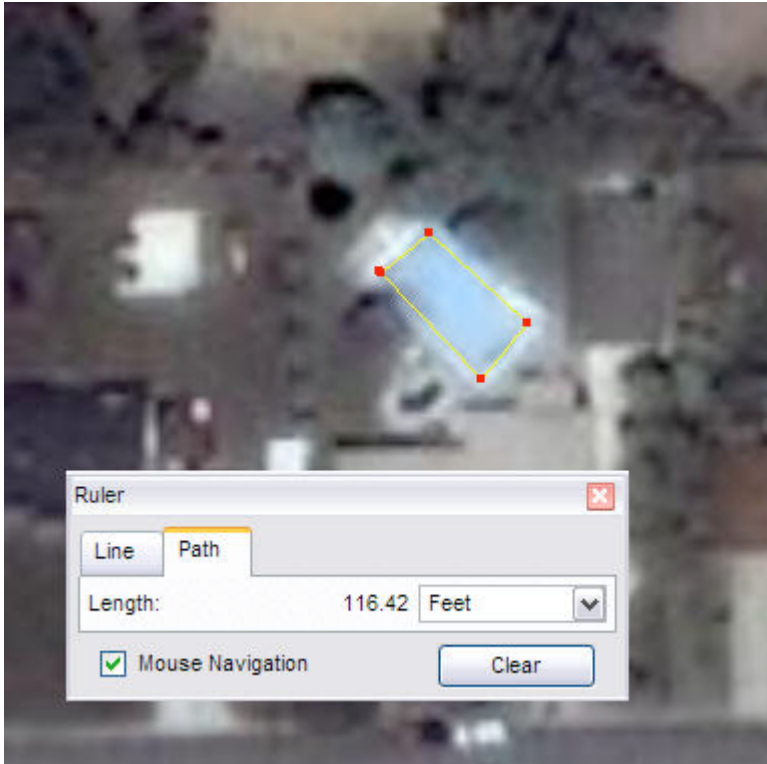
To test out your tour, click on the top level folder then click the play button at the bottom of the list.

Your tour will be saved automatically in the **My Places** folder. You can also save the tour in a separate file or e-mail it to someone by doing a **Save As** from the File menu.



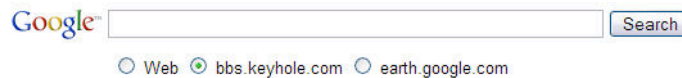


## Measuring in Google Earth



Under **Tools> Ruler** you'll find ways to measure objects in Google Earth. You can measure a path or a line. It's a great way to help kids understand spatial relationships.

## Google Earth Community



### Google Earth Community

Welcome covili. [Logout] [My Home](#) · [Entrance](#) · [Main Index](#) · [Search](#) · [Active Topics](#)  
[Who's Online](#) · [User List](#) · [FAQ](#) · [KML Reference](#) · [GE Guide](#)

	Threads	Posts	Last post
<b>News</b>			
<b>Google Earth News</b> (22 viewing) Headlines for the Entrance	52	85	<b>New User Guide for Google ...</b> (ink_polaroid) - 08/14/06 02:21 PM
<b>Google Earth Sightseer</b> (4 viewing) The Google Earth Sightseer Globe newsletter and the Where in the World contest	22	35	<b>The Sightseer September 20...</b> (Sightseer_Newsletter) - 09/29/06 09:50 AM
<b>Earth</b>			
<b>National Geographic Content</b> (10 viewing) The place for placemarks and discussions about content in the National Geographic Magazine layers.	161	1198	<b>AA</b> (tumber) - 10/18/06 02:35 AM
<b>Environment and Conservation</b> (4 viewing) Using Google Earth to understand and illustrate today's environmental issues	279	607	<b>Reservas de la Fundacion P...</b> (ProAves) - 10/18/06 11:54 AM
<b>Earth Browsing</b> (251 viewing) The primary forum for sharing and discussing places around the world	153694 (1)	183508 (1)	<b>SP College</b> (Shahkar_Riyaz_Tramboo) - 10/18/06 12:51 PM
<b>Dynamic Data Layers</b> (11 viewing) The home of user-published data layers that Google Earth users can easily install and enable: houses for sale, crime logs, today's weather, shared photographs, and many more.	803	3917	<b>observation data, support ...</b> (jcothran2) - 10/17/06 10:35 PM
<b>Models and Annotations</b> (16 viewing) Share and Discuss 3D models and geospatial annotations created with Google Earth Plus, Google Earth Pro, or KML.	1707	4244	<b>System file - sub-file to ...</b> (Frank4) - 10/18/06 11:15 AM
<b>Current Events</b> (23 viewing)	2297	8994	<b>NC Holiday Flotilla Wright...</b>



The Google Earth Community is found under **Help>Google Earth Community**. Within this community, you'll find quick access to ready made graphs and locations. After creating a free login, simply type in the topic you're after and download the .kmz files that you find. There's even an entire area dedicated to education.

Education	Threads	Posts	Last post
<b>Students</b> (12 viewing) Discussion area for students using Google Earth	9263	10078	Re: St Aloysius school (DAnUrAgSiNhAX) - 10/18/06 04:46 AM
<b>Educators</b> Discussion area for educators using Google Earth	44 (16)	171 (37)	Re: Google Earth in elemen... (TheLedge) - 10/09/06 03:25 AM
<b>Tools</b> (3 viewing) Tools for using Google Earth in an educational setting: placemarks, guides, tests, and other resources.	278 (129)	1230 (521)	Re: 225 nuclear power plan... (riffraff9000) - 10/18/06 07:26 AM

## Lesson ideas for Google Earth

### Math: Estimation Activity

How about having students visit Theme/Amusement Parks around the U.S. or world where there are high resolution images of the parking lots and having them estimate the number of: A. cars in the parking lot, B. Park attendance based on the average number of people per vehicle, etc. (<http://www.gelessons.com/cgi-bin/ideabucketread.cgi>)

### Geography: Maps Then, Earth Now

The US Library of Congress has a huge collection of maps. Some of my favorites are the old panoramic maps where the towns are drawn in '3D'.

It might be interesting for students to use images from the library in creating overlays to show population growth and development over time. (<http://www.gelessons.com/cgi-bin/ideabucketread.cgi>)

The collection can be browsed at:

<http://lcweb2.loc.gov/ammem/gmdhtml/gmdhome.html>

### Social Studies:

Virtual tour of historic sites, wonders of the world, battlefields, important cities, etc. with links to websites full of valuable information to help students with research.

### Language Arts:

Tour the birthplaces of literary figures or the cities that set the stage for novels.



Health:

Look at the environments and populations of nations all over the world to discuss the impact of environment, health care, natural disasters, disease, sanitation on people and their survival. (Add in statistics from Culture Grams in the Pioneer library to really bring the point home.)

Science:

Explore earthquakes, volcanoes, natural disasters, biology, and all other fields from a birds-eye perspective.

Foreign Language:

Explore the culture of nations that are being studied (French, German, Italian, Japanese, etc.) and visit landmarks, government buildings, and museums.