

# Snap Happy Bags

Finished size: 7 1/2" X 6 3/4"

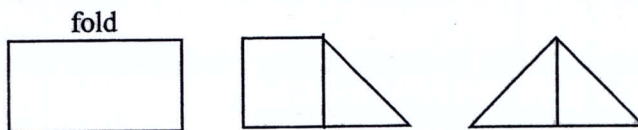
## Cutting:

- Outer fabric: 8" X 13"
- Lining fabric: 8" X 16 1/2"
- Lt. wt. batting: 8" X 13"
- Fusible light wt.
  - Interfacing: 8" X 3" (cut 2)
- Tabs: 3 1/2" squares (cut 4; 2 from each fabric)
- Handle loop (opt.) 1 3/4" X 4" from outer fabric

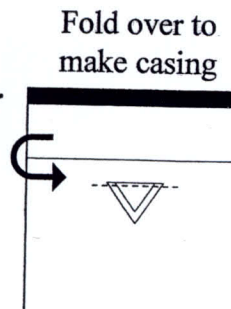
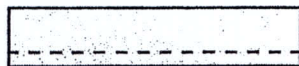
For all sizes of bags, the lining fabric is always 3 1/2" longer.  
The finished size of the bag will be half the outside fabric minus the seam allowance

1. Fuse the 3" piece of interfacing to each end of the lining.
2. Fuse the batting to the back of the outer fabric.
3. Fuse the light weight interfacing to the lining fabric; center it.
4. Sandwich the outer fabric with the lining fabric; wrong sides together, pin.  
NOTE: the lining will extend 1 3/4" longer on each end.
5. Quilt as desired; loop – de – loops, straight lines, stipple, etc.
6. On each end of the lining; press under 1/4".
7. Fold the lining to the right side of the outer fabric; this will create a casing for the medal tape.
8. Tabs or prairie points:
  - a. Fold the square lengthwise.
  - b. Fold sides to the center to create a point. All the raw edges will be together.

c. Press.



9. Center the tabs 3/4" down from the top of outside fabric; center; stitch.
10. Fold the lining over, stitch to form casing and secure the tabs.
11. Opt. loop for handle; sew a 1/4" seam with RST, turn, and press.  
This loop handle will be inserted in the side seam.



12. Metal measuring tape:

- a. Cut 2 pieces of metal measuring tape (for better “snap”, use 2 per side)  $\frac{3}{4}$ ” **shorter** than the length of the casing. Use old scissors or tin snips.
- b. Round the ends; cover end with duct tape or masking tape. This will prevent the ends from cutting into fabric.



13. Put the measuring tapes into the casing with the numbers **facing toward the inside of the bag.**

14. Fold the bag with RST; line up the top of the casing.

15. Before you sew the side seam, insert the loop handle in the side seam; making sure the loop will be on the outside of bag after you sew the side seam. This handle is optional.

16. To sew the side seam, use a  $\frac{1}{4}$ ” seam being careful on EACH side **not** to sew through the metal tape measure. Also, if you are using a loop handle, make sure it is sewn in with the seam.

17. You can finish the seams with a zig-zag or serger. **(Be very careful)**

18. **NOTE:** these bags can be made in any size; Cut the lining  $3 \frac{1}{2}$ ” LONGER than the bag fabric.

19. You can also square the bottom of the bag.

This site has wonderful pictures; she just asks this and I quote:

“I you use my tutorial to make a bag I would love to see the pictures and please give me credit for the pattern.”

<http://tatteredgarden.blogspot.com/2010/01/snappy-bag-tutorial.html>









