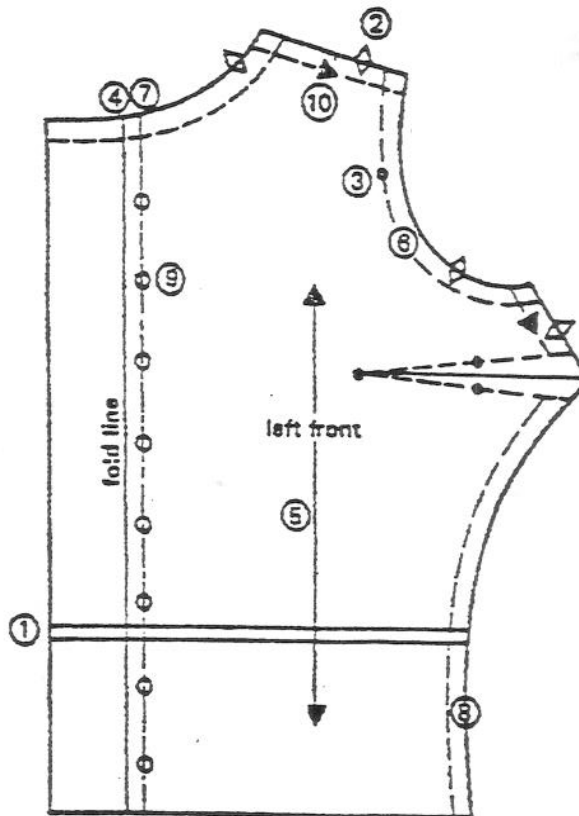





Name \_\_\_\_\_ Period \_\_\_\_\_ Date \_\_\_\_\_

**DECODE THE CODES**

Directions: Fill in the blanks of the sentences below with a word or phrase showing your understanding of pattern markings.



The lines at ① above indicate a good place to \_\_\_\_\_ or \_\_\_\_\_ the pattern piece. The \_\_\_\_\_ at ② and the dot at ③ are to be matched with similar markings on other \_\_\_\_\_. The line at ④ is not for cutting or placing on a fold in the fabric but rather for \_\_\_\_\_ for use later. Line ⑤ indicates the \_\_\_\_\_. Line ⑥ is the \_\_\_\_\_ line. Line ⑦, which may be solid or broken, is the \_\_\_\_\_ line and is used mainly for fitting. Line ⑧ is solid or broken on multisized patterns and is used for \_\_\_\_\_. The circles indicated by ⑨ are for \_\_\_\_\_, and this mark  would be found in the same places on the opposite front pattern piece to indicate \_\_\_\_\_. The arrow ⑩ shows \_\_\_\_\_.