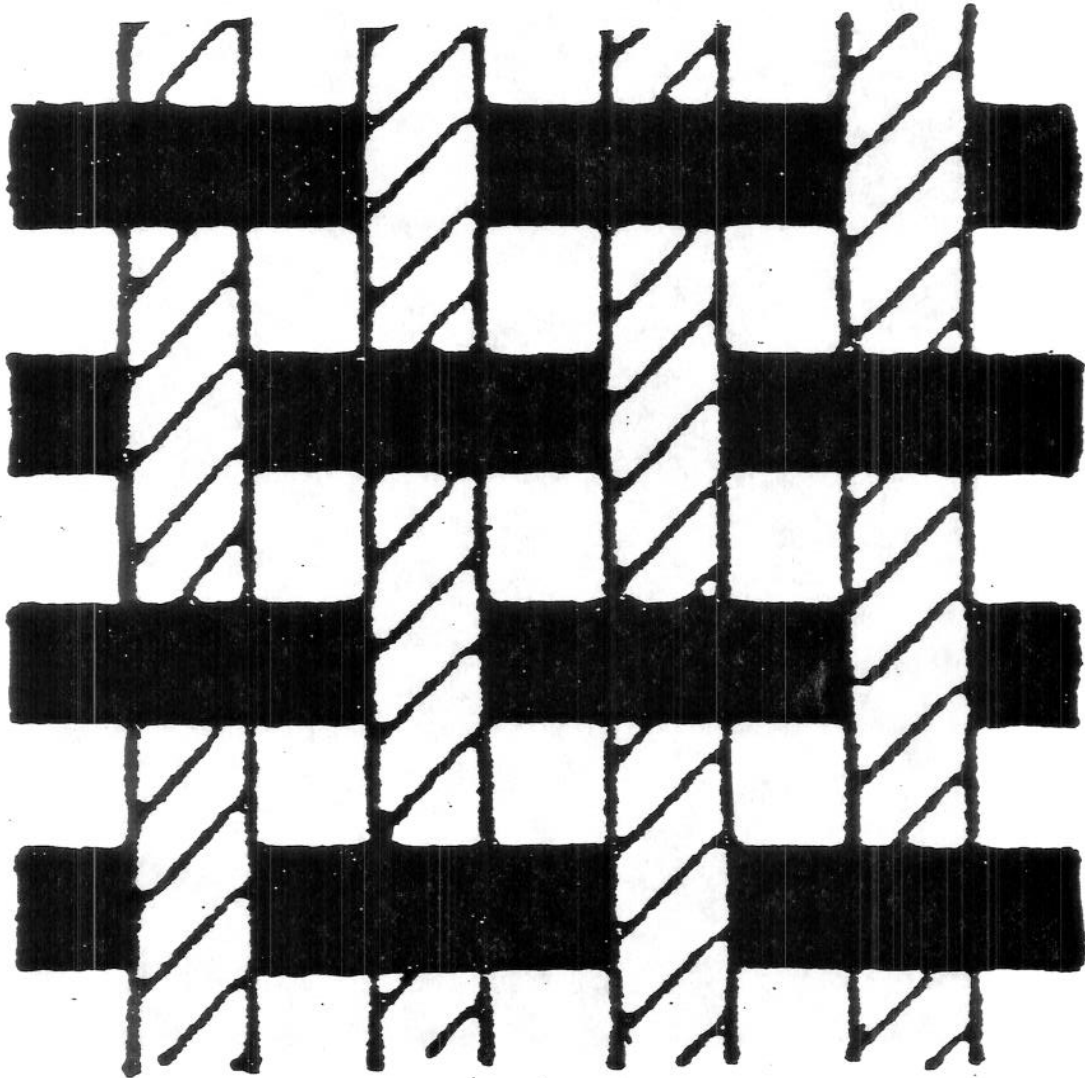




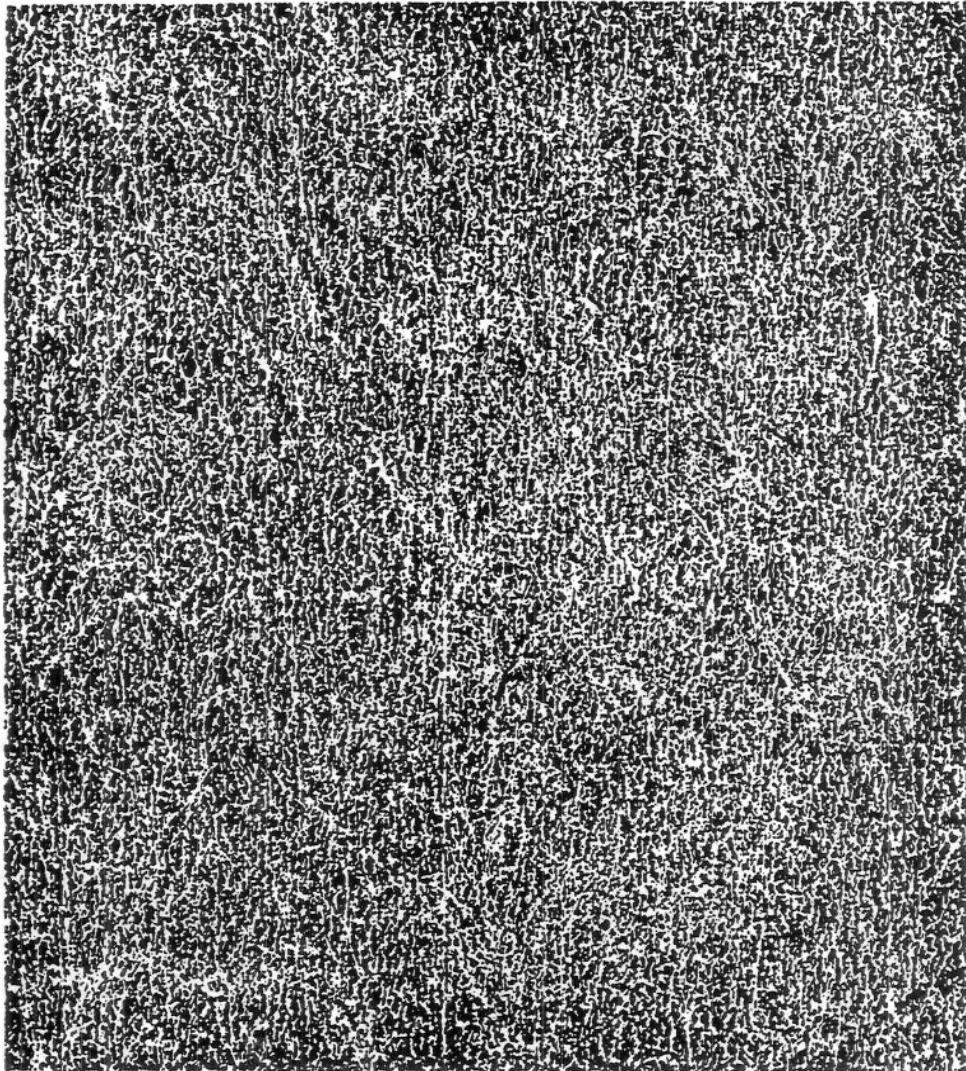
WOVEN FABRIC



**IS MADE BY
INTERLACING TWO SETS OF YARNS
PLACED AT RIGHT ANGLES
TO EACH OTHER.**



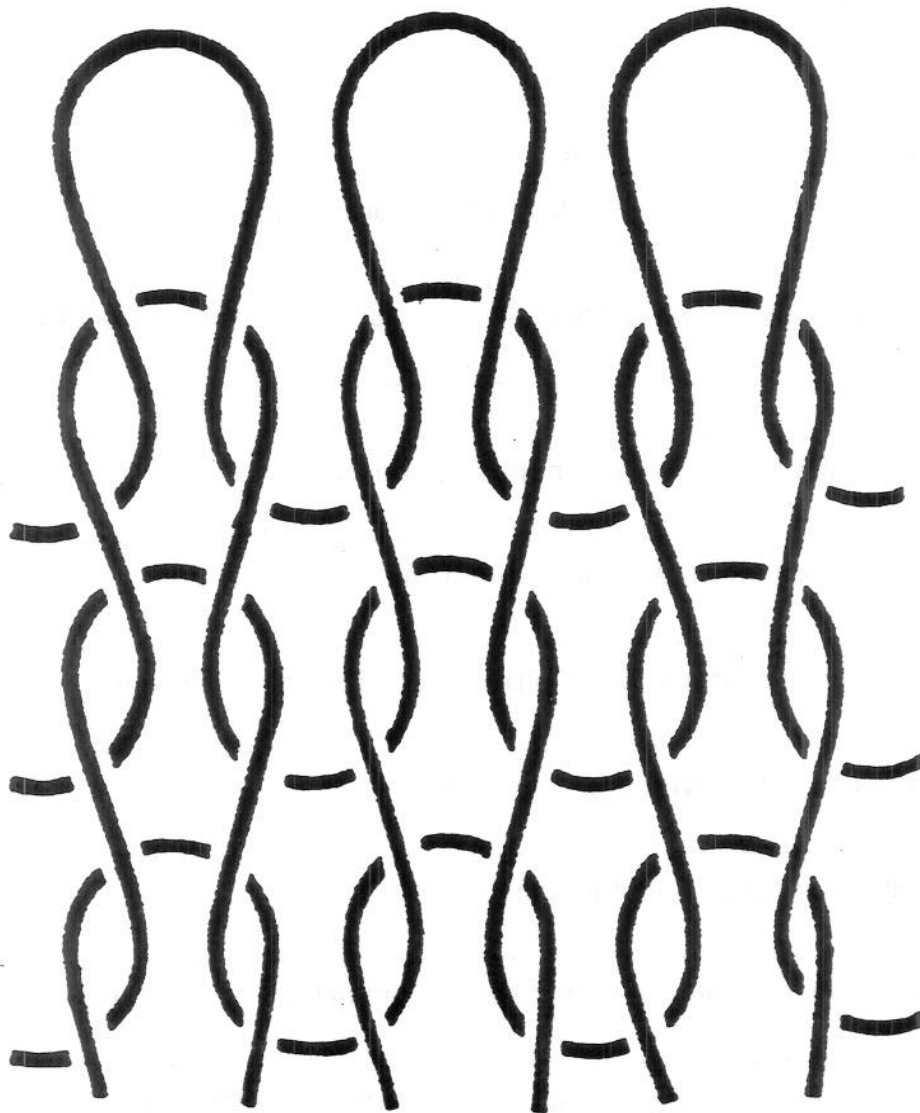
NON-WOVEN FABRIC



**IS MADE DIRECTLY FROM FIBERS
RATHER THAN FROM YARNS;
IS HELD TOGETHER BY MOISTURE,
HEAT, CHEMICALS, RUBBING,
AND/OR PRESSURE.**



KNIT



**IS MADE BY A SERIES OF LOOPS FROM
THE SAME, CONTINUOUS YARN,
INTERLOCKED TOGETHER.**