

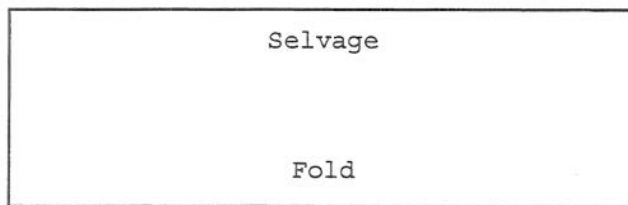


Name _____ Period _____ Date _____

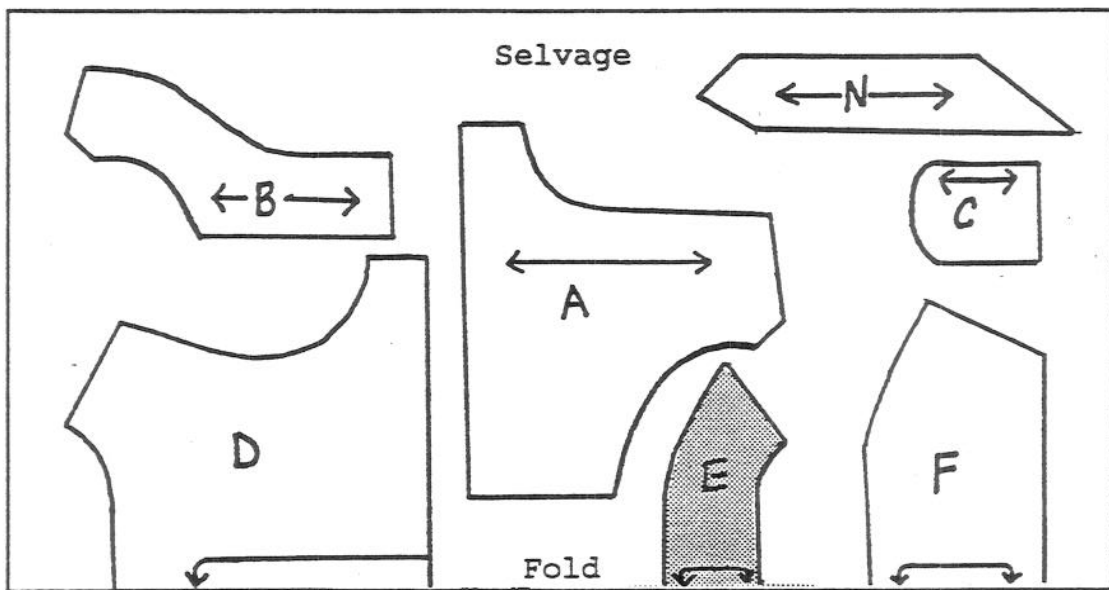
LAYOUT LOGISTICS

Directions:

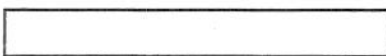
1. Cut out the pattern pieces on the attached page.
2. On a white sheet of paper, label one edge "fold" and the other side "selvage."
(Newspaper that is already folded can be used.)



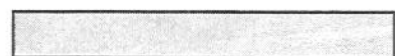
3. Place the pattern pieces on the paper following the layout below. Remember to measure your grainline from the edge and be sure it runs parallel to the selvage and fold. When all of the pieces have been placed, glue them to your "fabric."



Printed side of pattern up



Printed side of pattern down



4. Clean your area when finished.