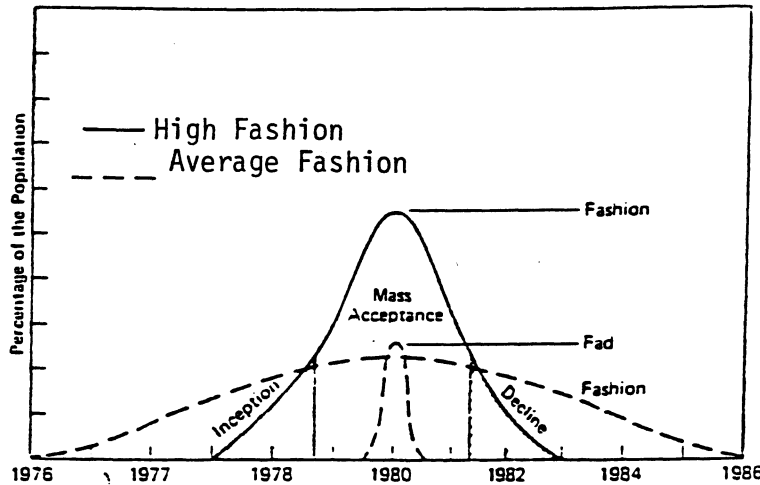
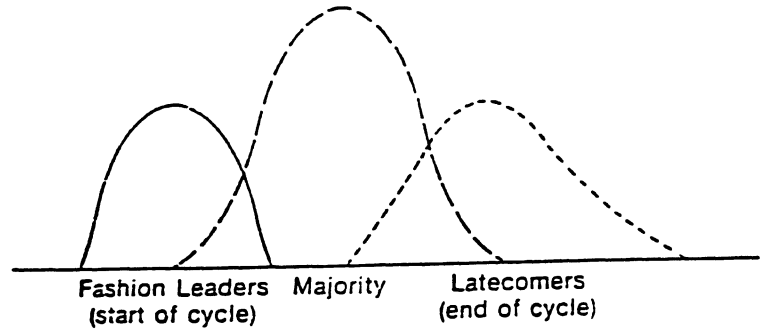
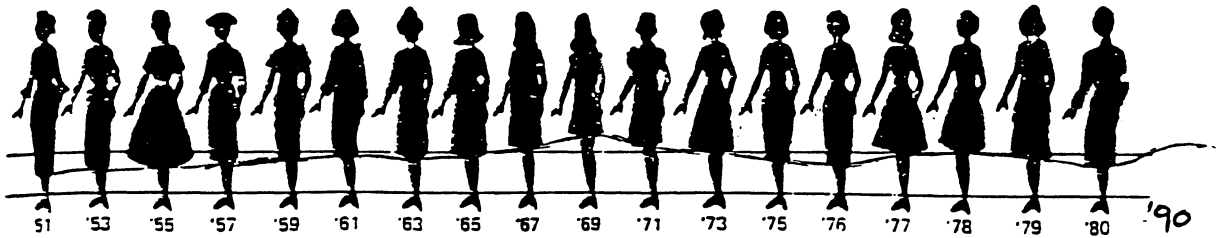
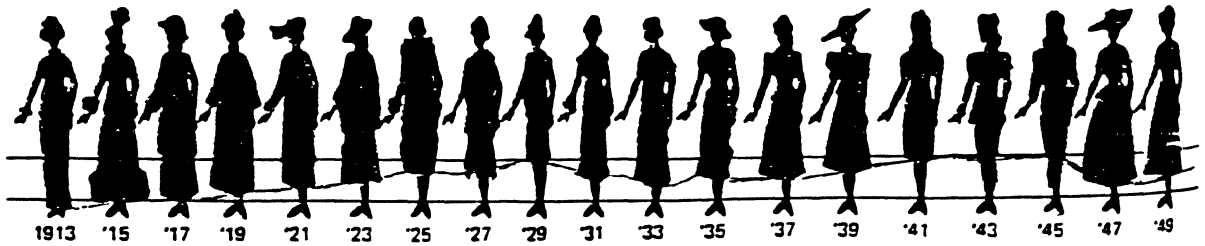


Fashion Cycle: Introduction, Rise, Culmination, Decline, Obsolescence



Intro. Beginning of curve
 Rise- Style gains momentum
 Culmination- Highest amount of acceptance
 Decline- Interest begins downward move
 Obsolescence- end of the fashion



The recurring cycle in skirt lengths. Try this with other aspects of dress, such as the width of men's trousers, shoulder width, shoe proportions, and the like.