

# HAIR CARE





HEART



SQUARE

# Choose a Hairstyle By Your Face Shape



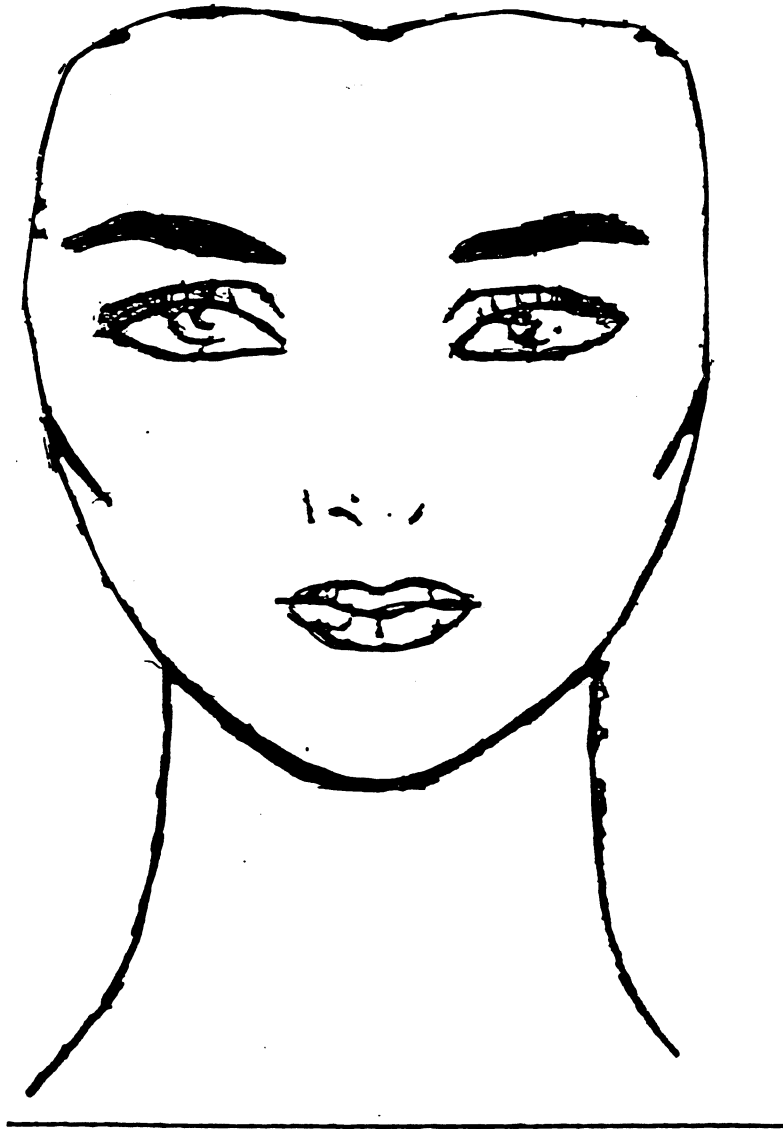
ROUND



RECTANGLE



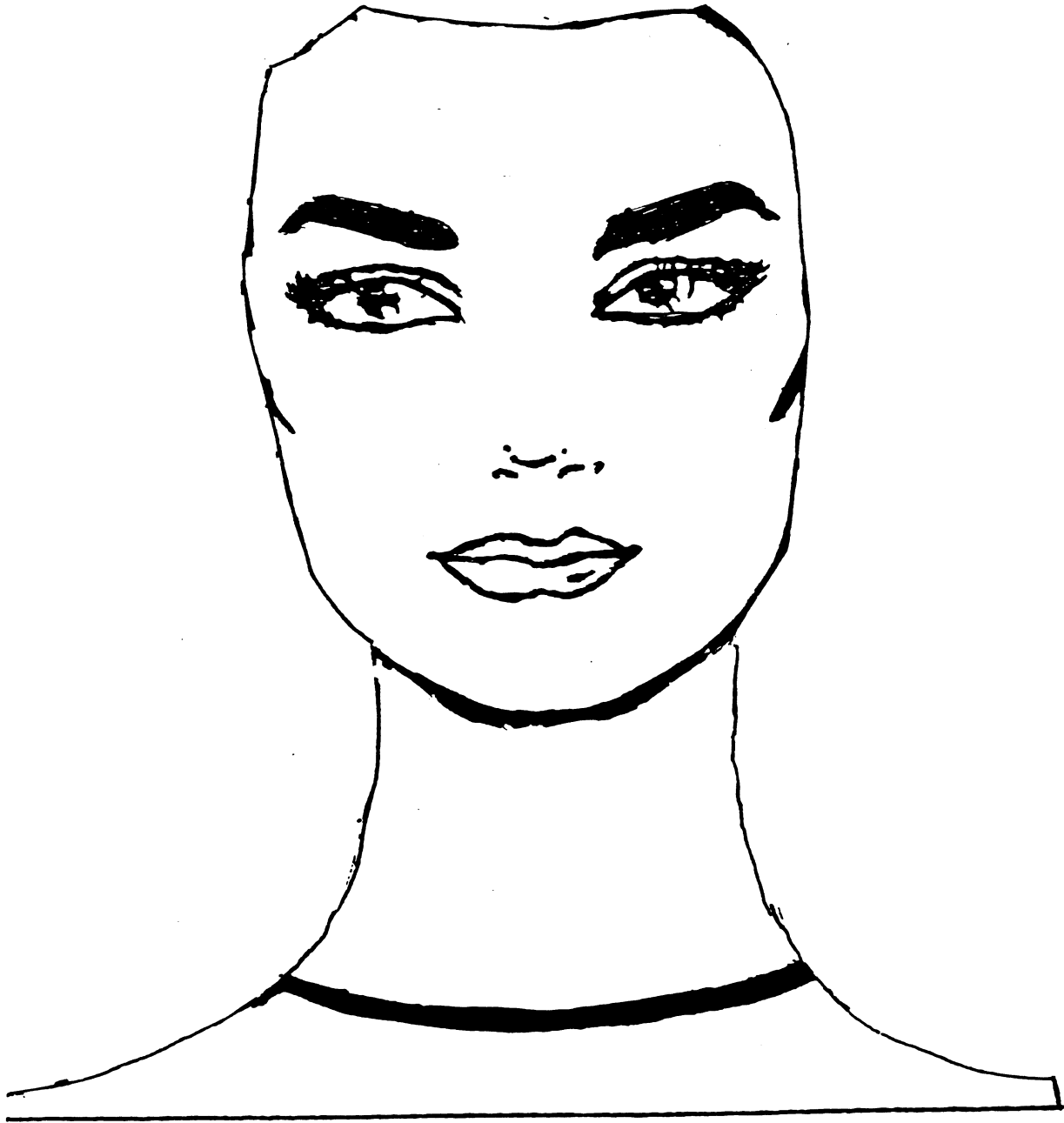
OVAL



## HEART

### THE HEART FACE

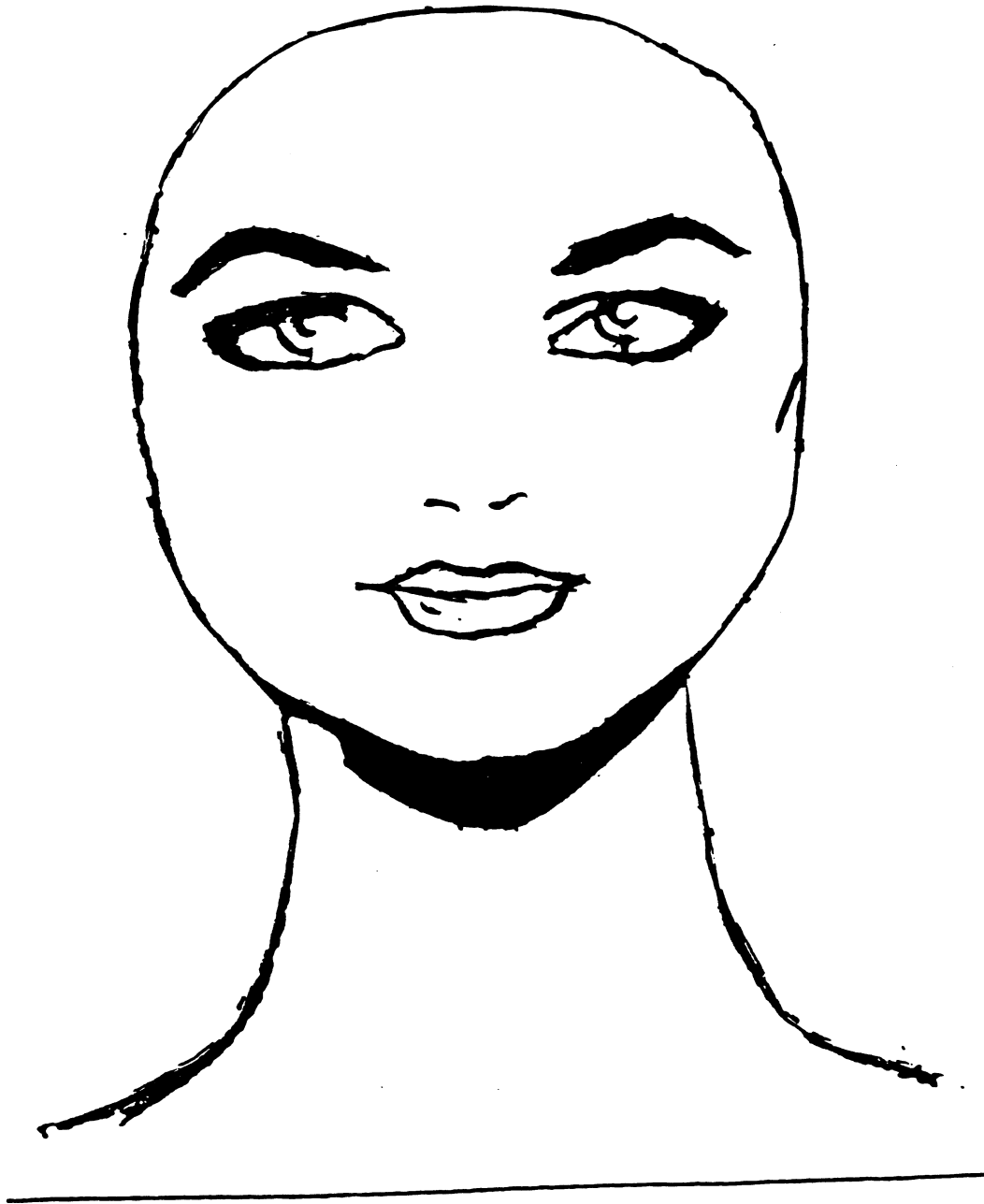
The heart-shaped face is really an inverted triangle-wide at the top, tapering to a narrow jaw. The best hair style for this type of face is one that adds width and fullness to the lower part. A medium to a long cut is best, that brings fullness around the chin and neck area.



## SQUARE

### THE SQUARE FACE

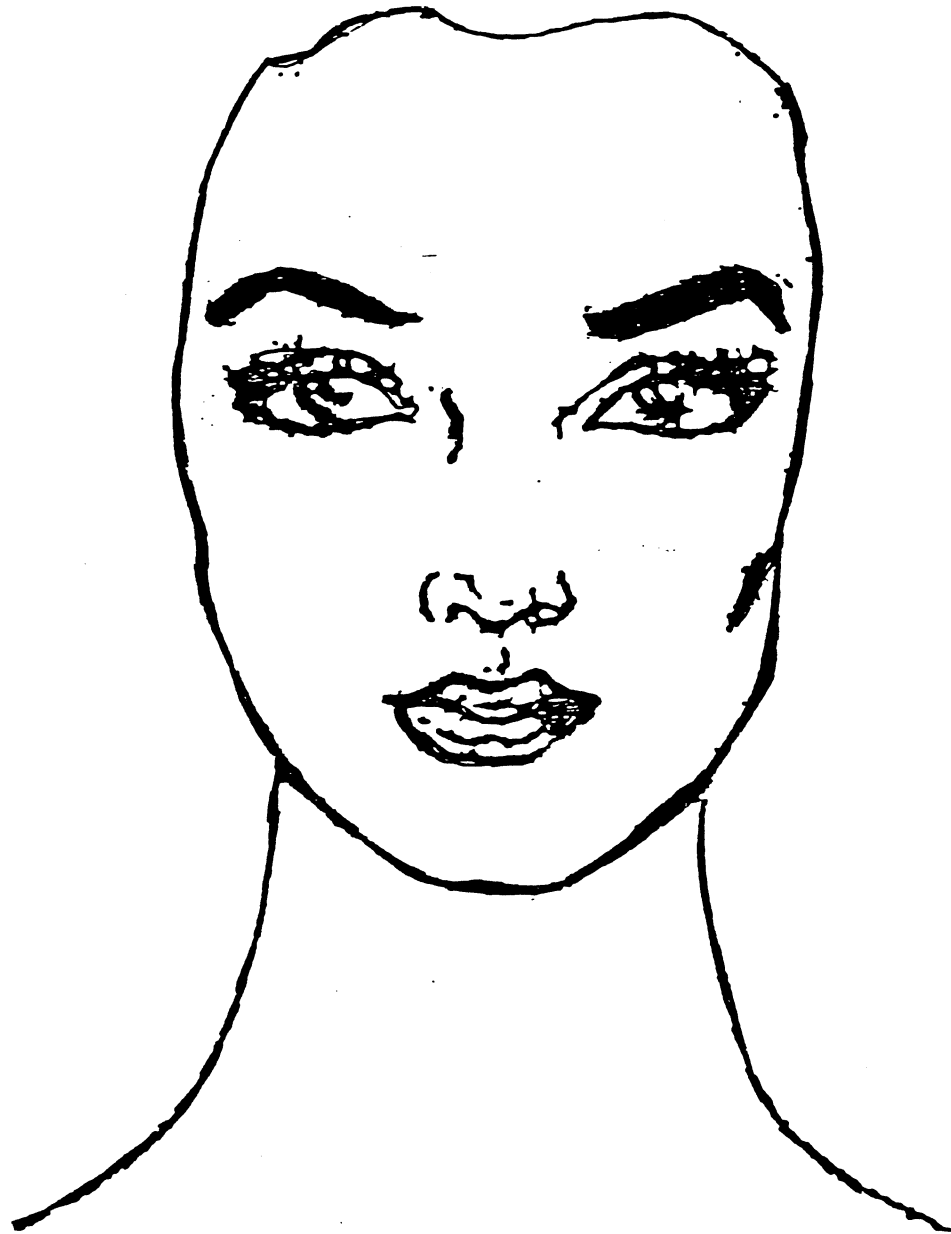
If your forehead and jawline are almost equally wide and the lines of your face are angular, rather than simply broad or chubby, the hairstyle for you is one with soft, rounded lines. Avoid anything that emphasizes squareness: straight-across bangs, a flat top, a straight line blunt. The length should be medium or long rather than short. Soft bangs and curls soften the square lines.



## ROUND

### THE ROUND FACE

If your face is fairly short and broad, with rounded contours and full cheeks, you need a hairdo with high narrow lines. The top should be fairly high to lengthen your face, and the sides close to your head and as smooth as possible. Slanted bangs break up circular lines. Sides can come forward onto your cheeks to cut their width. Avoid hairdos with rounded symmetrical lines.

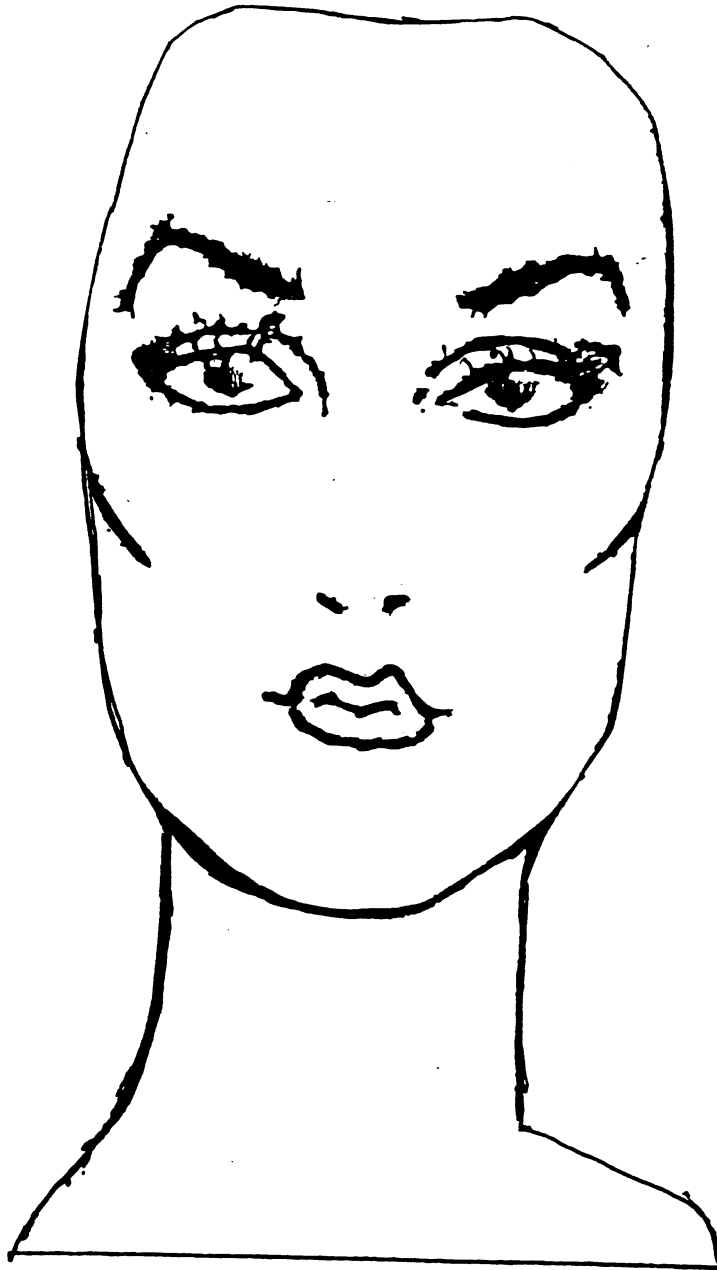


---

## OVAL

### THE OVAL FACE

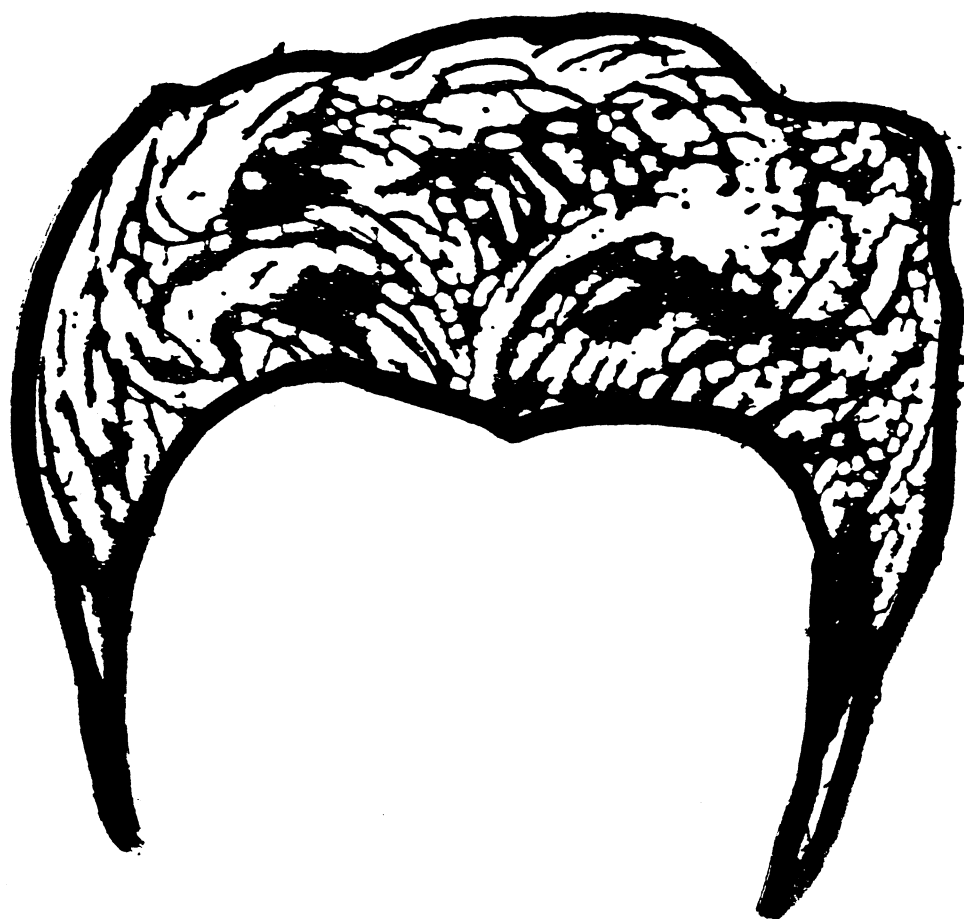
If you have an oval shaped face, you are fortunate when choosing a hairstyle. You will be able to wear most any hair style if your features are fairly regular.



## RECTANGLE

### THE RECTANGLE FACE

If your face is long and thin, with forehead cheekbones and jawline all narrow, forming a long oval, you are considered to have a rectangle face shape. Your best hairdo is one that makes a wide, soft frame around your face. The crown should be rounded but keep bangs and top low to minimize height. The sides can be quite full and the ends curled. Avoid straight "skinny" looks that will seem to lengthen the face.

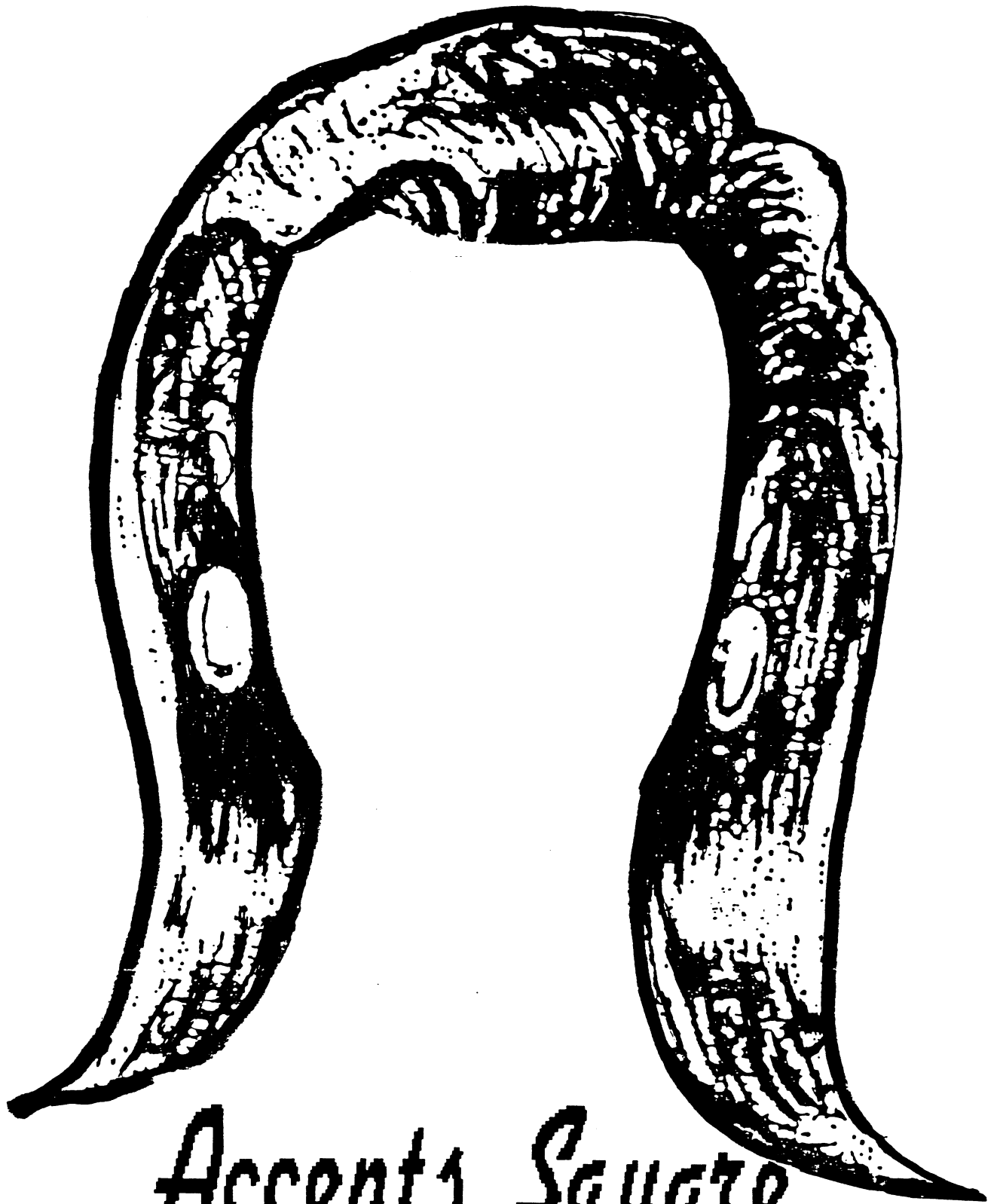


*Accents*  
*Heart Shape*

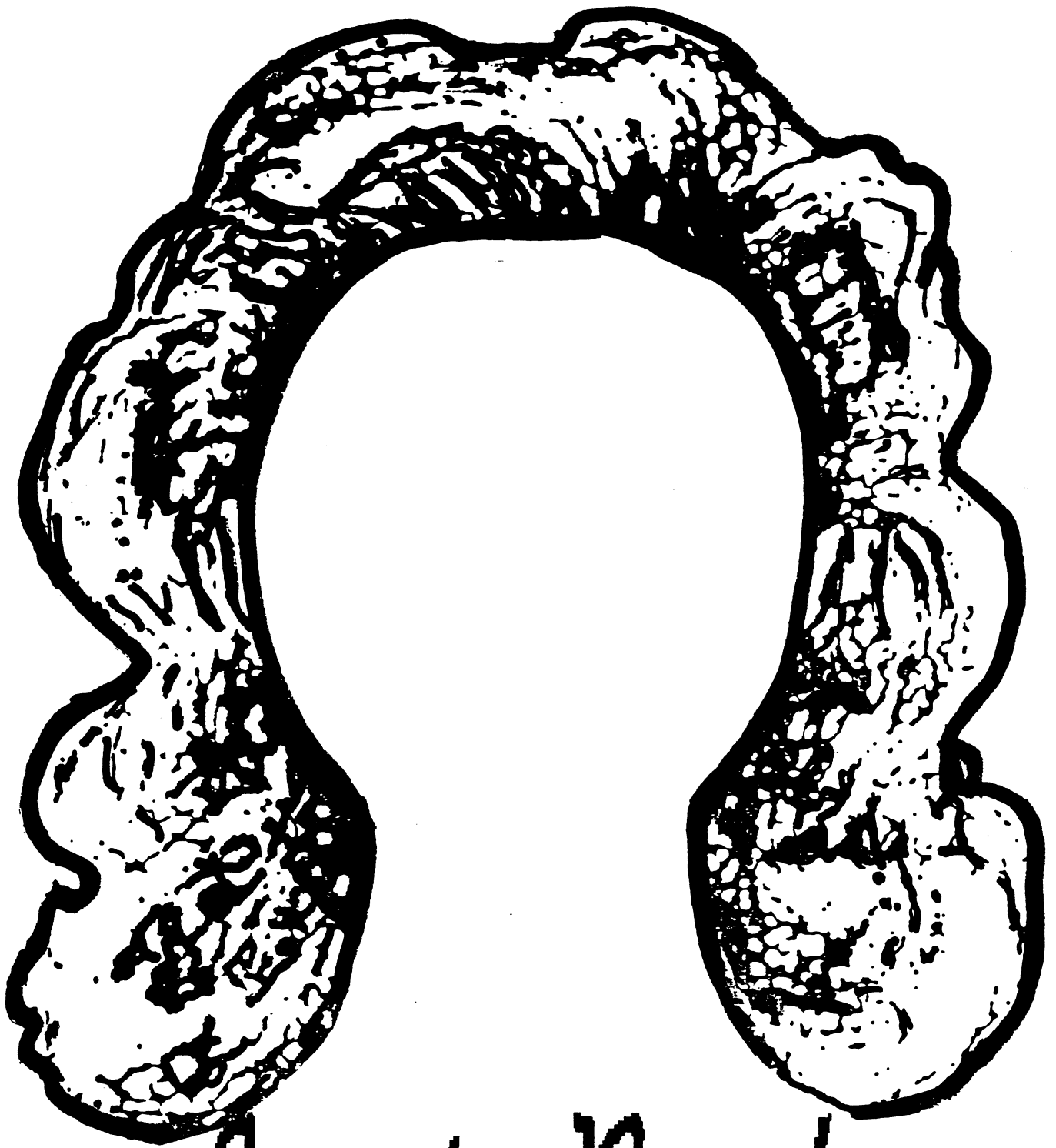




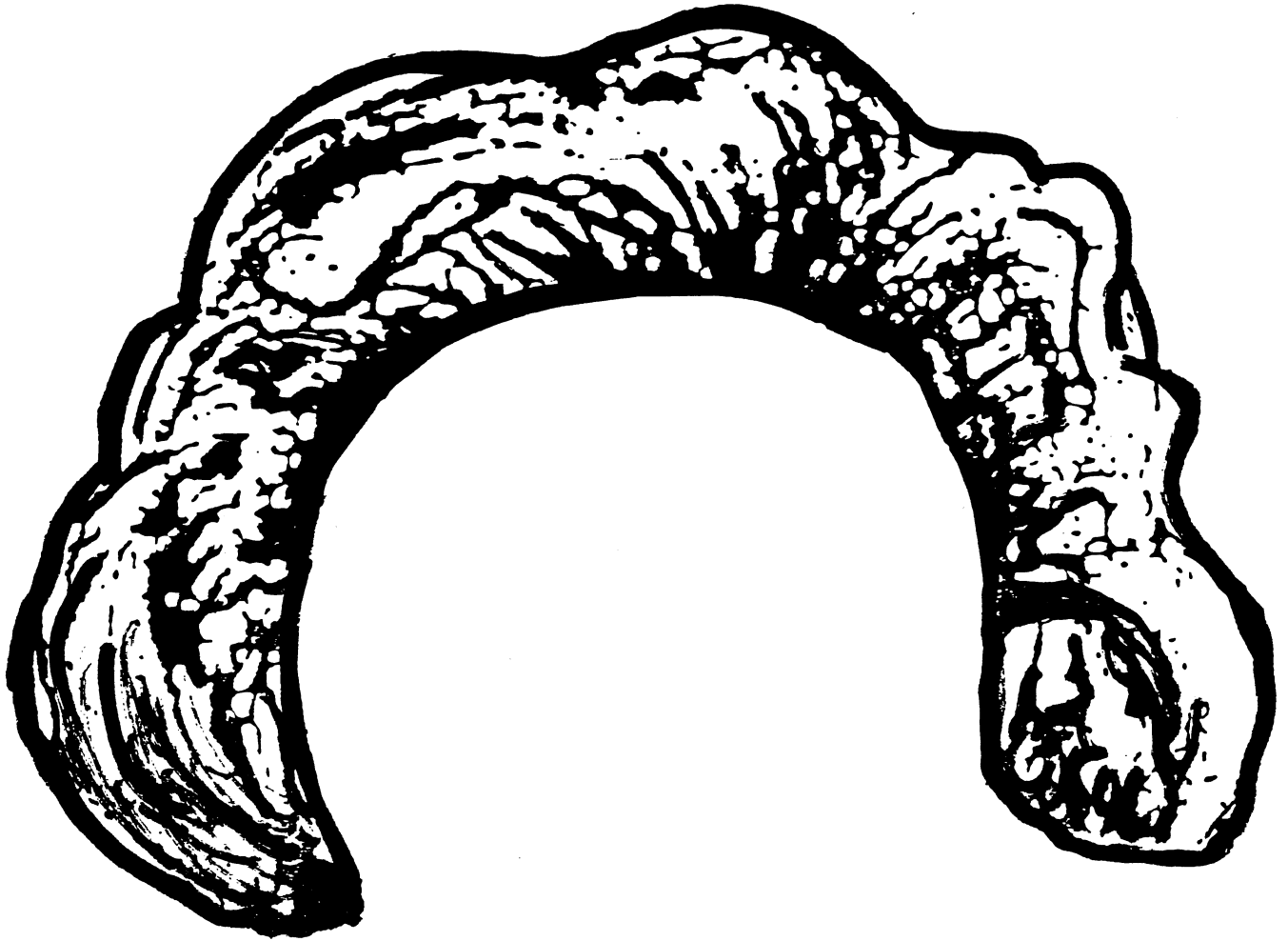
*Improves  
Heart  
&  
Squats*



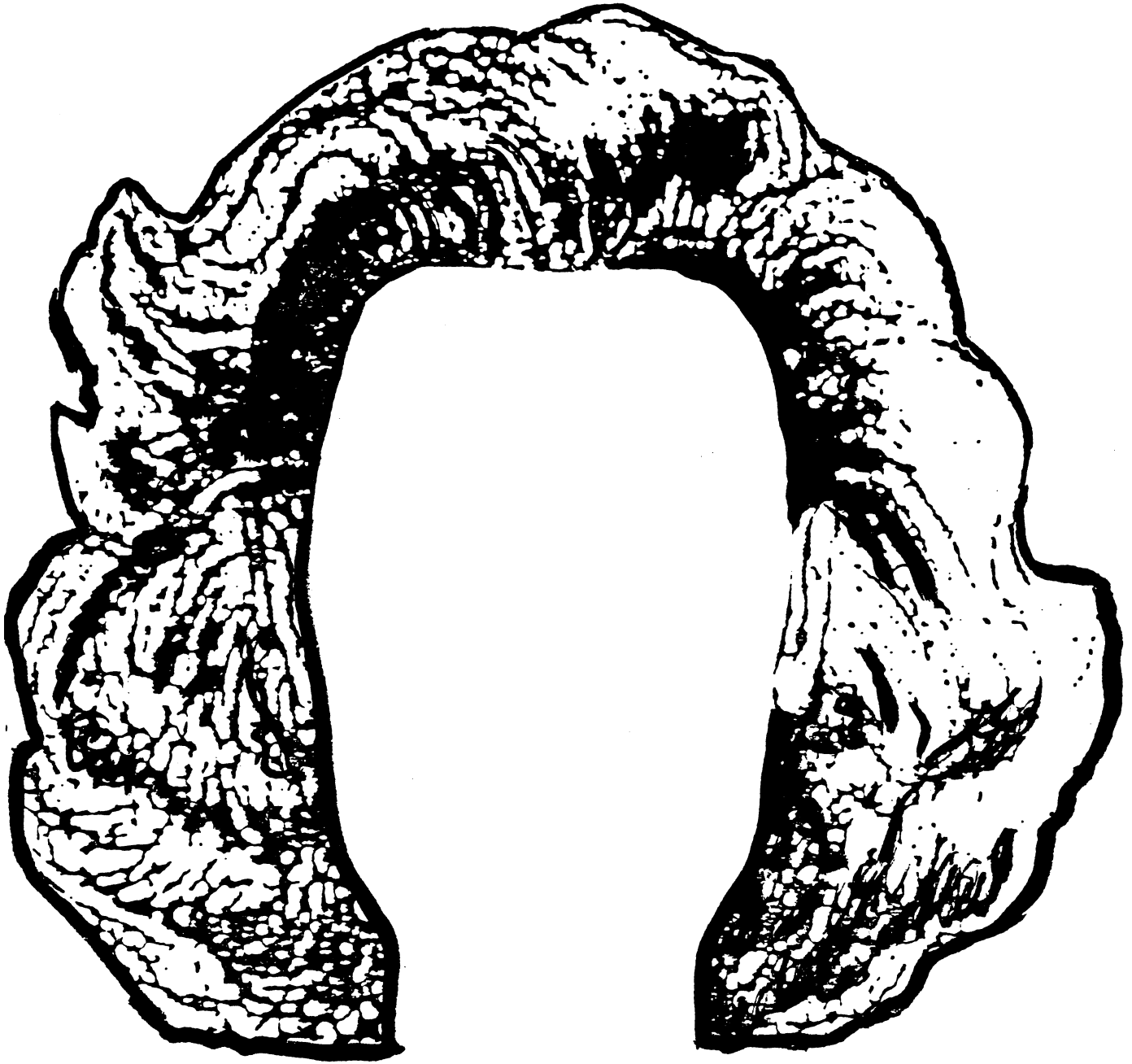
*Accents Square  
Improves Round*



Accents Round  
Good Rectangle



*Accents Round  
Improves  
Rectangle*



*Accents*  
*Rectangle*



*Accents Oval*



*Improves  
Rectangle*