

# NECKLINES

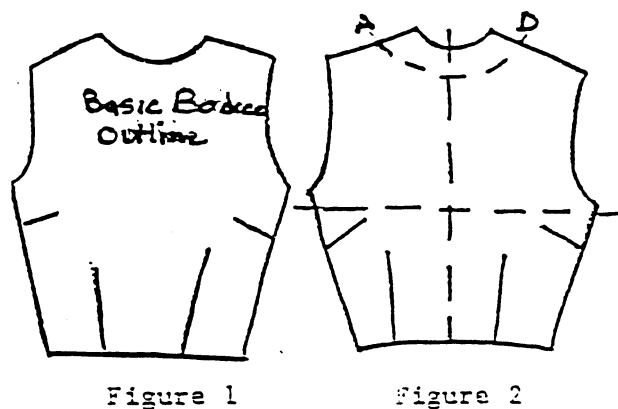
## ALTERING THE NECKLINE

### DIRECTIONS:

1. To help determine the shape and location of the new neckline. Add dotted lines to the design, (Fig. 2) to show the bustline, center front and original neckline.

Original neckline can be obtained by making a tracing of the basic bodice outline, (Fig. 1) and superimposing it on the design.

2. Design the new neckline on the pattern, line AD in Figure 2. Separate the old neckline area from the rest of the pattern by cutting along line AD. **DO NOT DISCARD IT.**
3. Add 5/8" seam allowance and notches to the new neckline.



Note: If you change the neckline - you will also need to change the neckline facing.

Figure 1

Figure 2

(Remember to alter back neckline also)

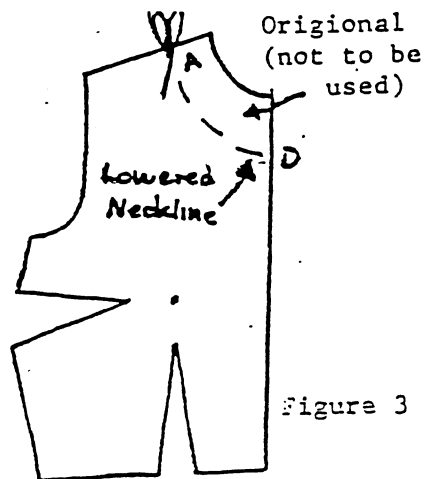


Figure 3

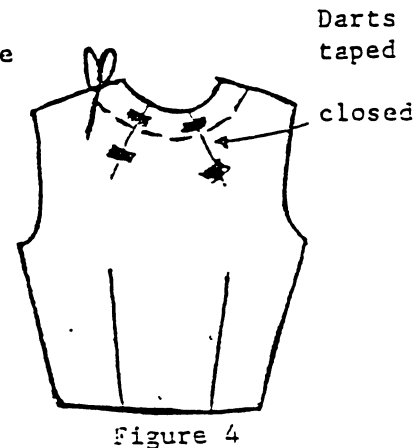


Figure 4

### LOWERING THE NECKLINE ACROSS A DART

When the lowered neckline crosses a dart, as in Figure 4, the procedure will be modified as directed below.

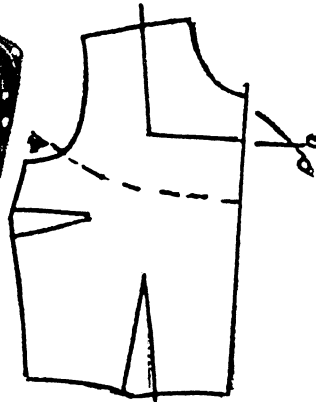
1. Keep the dart taped closed while designing the lowered neckline.
2. Cut the pattern apart on the new neckline while the dart is still folded.
3. Add 5/8" seam allowance and notches while the dart is still closed.

# NECKLINE VARIATIONS

Square Neckline



NOTE: Remember to change back neckline, and make back neckline facings.



Note: Facings are indicated by the broken lines on the patterns: - - - -

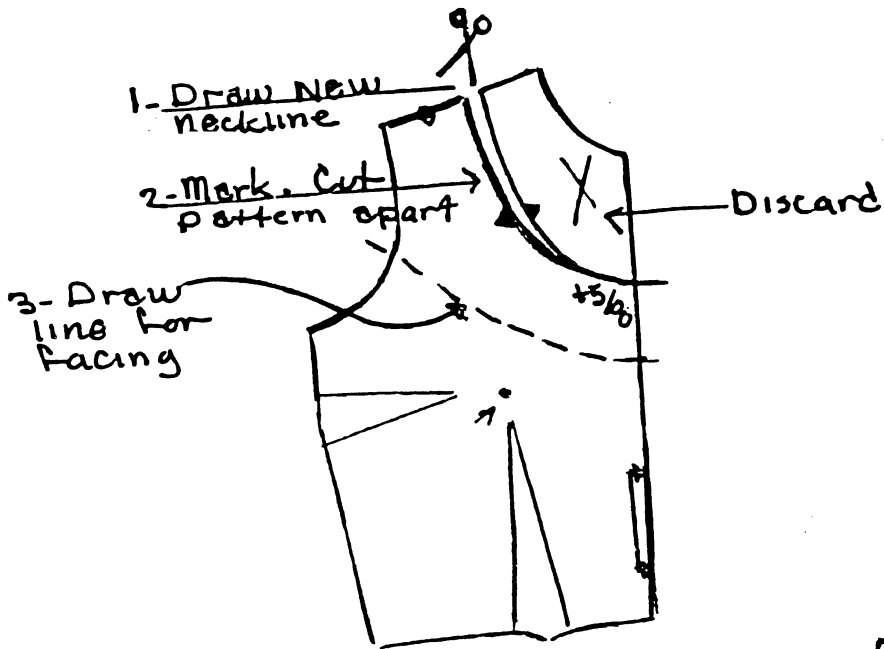
SWEETHEART NECKLINE



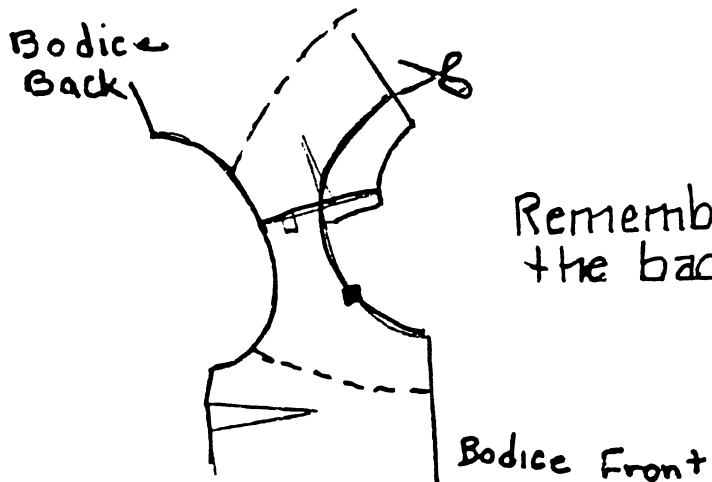
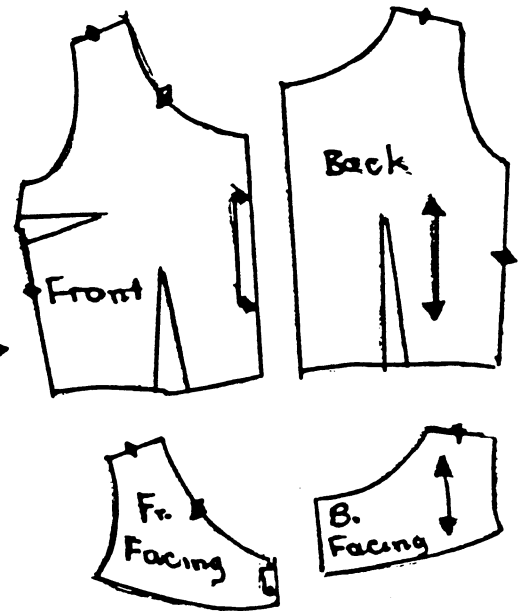
V-neckline



# SCOOP NECKLINE



Finished Pattern →



Remember to change the back neckline also.