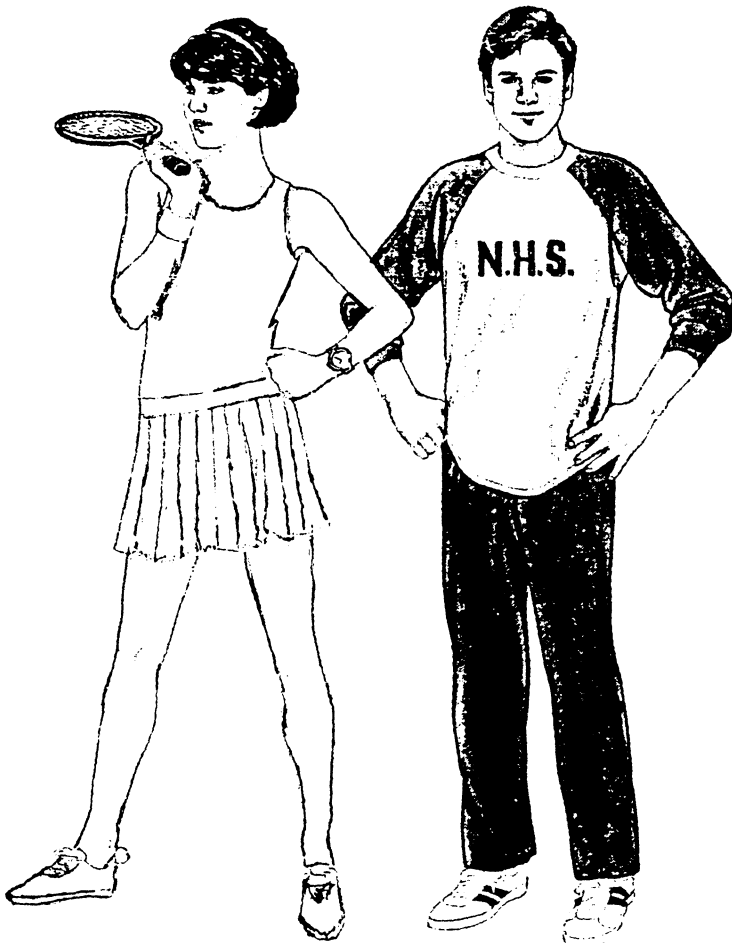




decorative lines



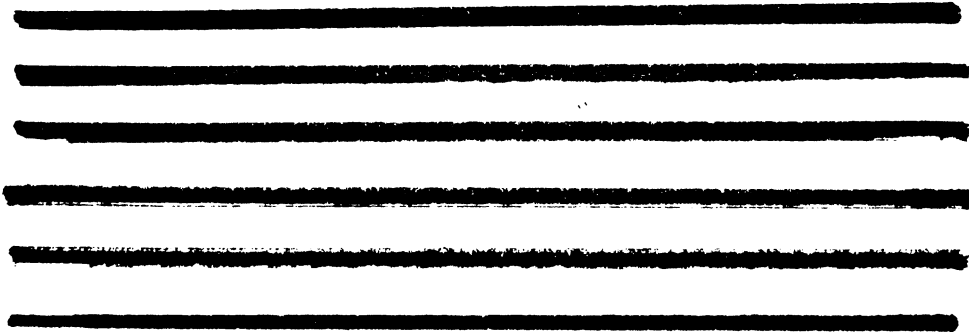
structural lines

THESE TEENS ARE WEARING CLOTHING WITH LINES DESIGNED TO CREATE THESE SPECIAL EFFECTS:

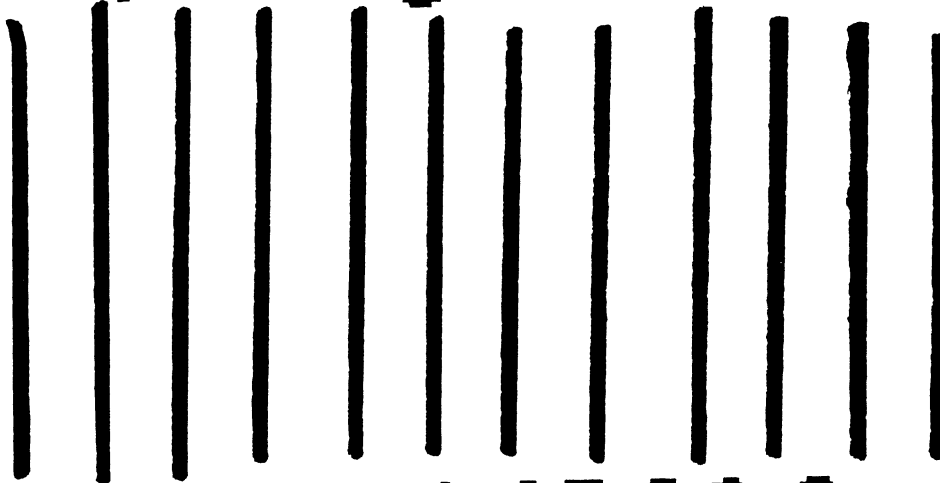
- 1. HEIGHT
- 2. ATTENTION-GETTING
- 3. LESS-HEIGHT
- 4. WIDTH
- 5. SOFTNESS



**** LINES ****

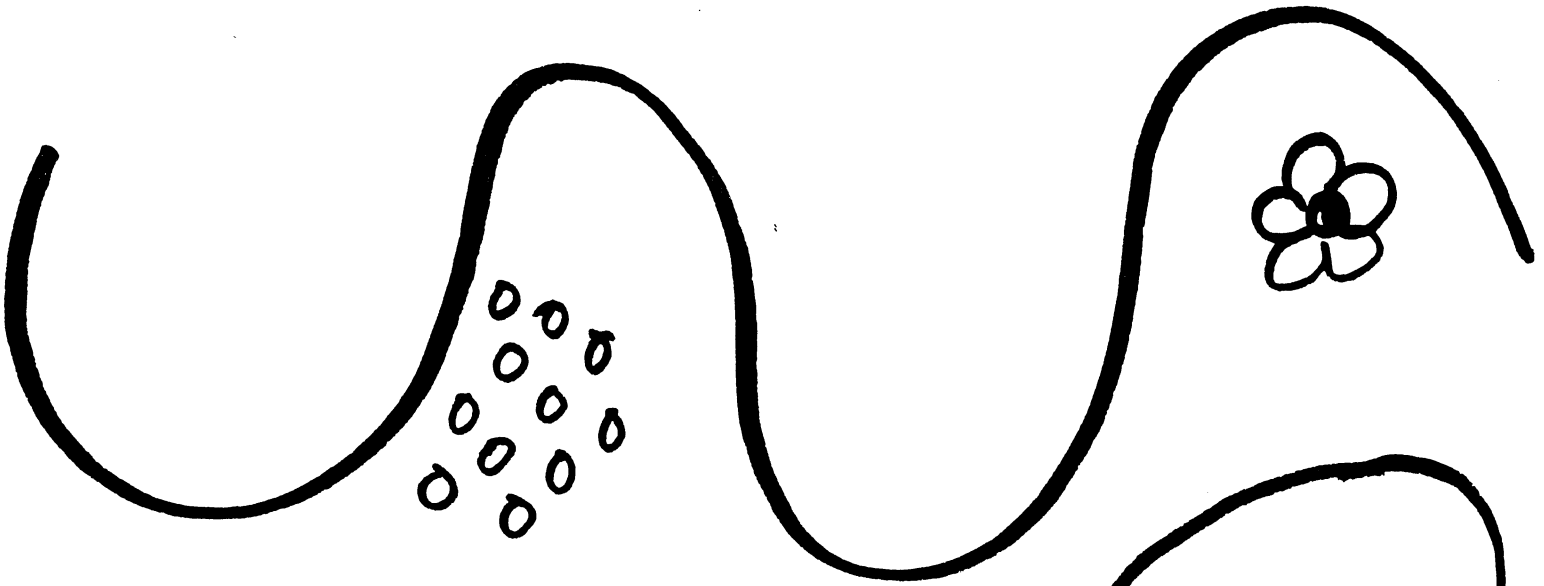


HORIZONTAL



VERTICAL

**** LINES ****

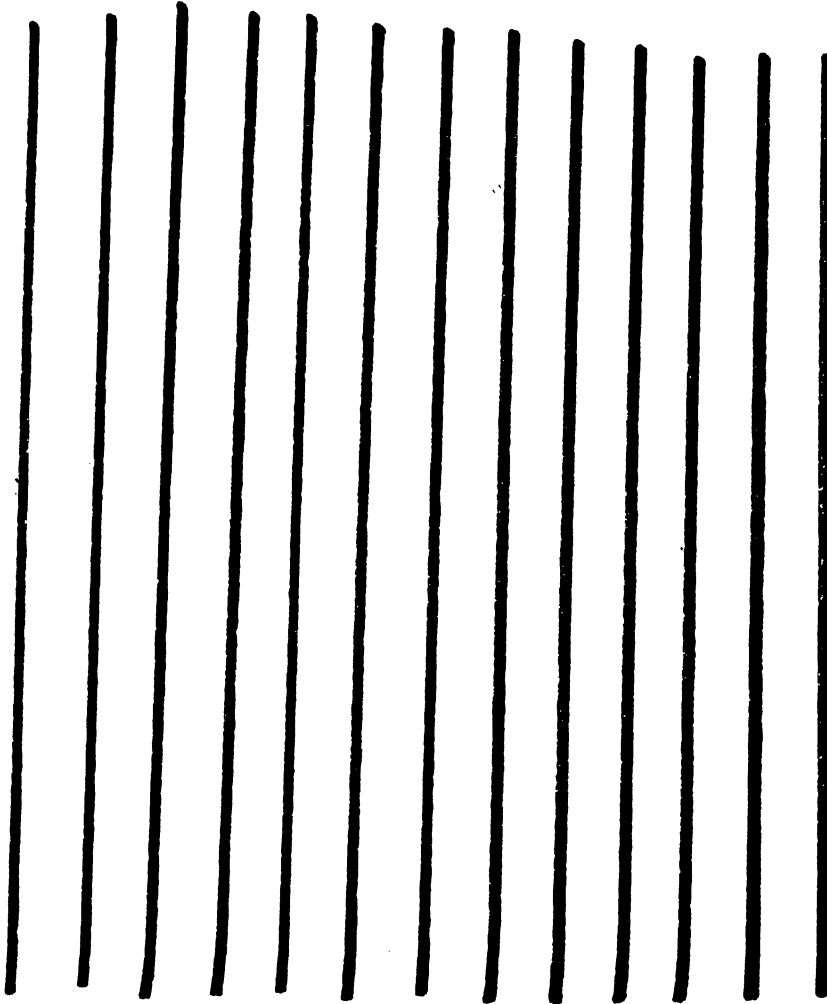


**** LINES ****



DIAGONAL

**** LINES ****



NARROW

**** PINES ****



WIDE

LINES AND ILLUSION

