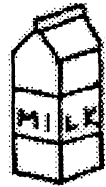


Instant Pudding

You Need:



1 cup milk



5 Tb. instant
jello pudding mix



liquid
measuring cup



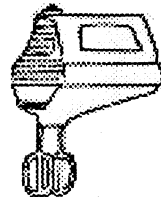
Tablespoon



metal spatula



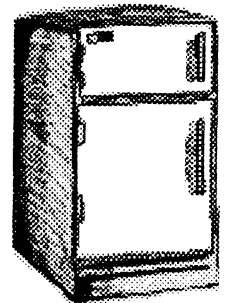
bowls



handmixer

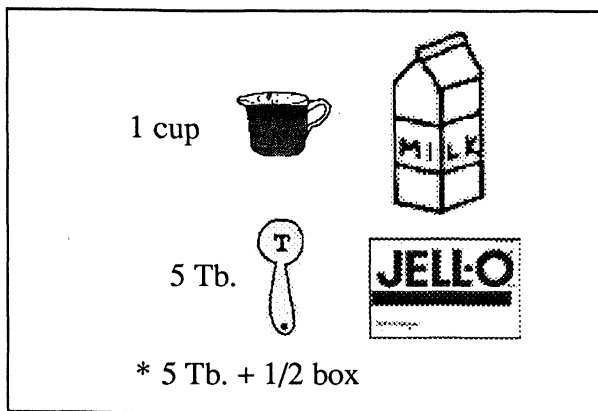


bowl



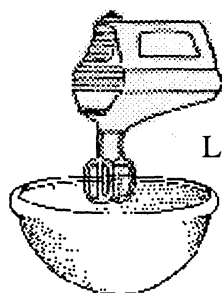
refrigerator

1.

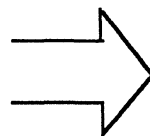


Measure and add 1 cup milk and 5 Tb. instant jello pudding mix.
Put in bowl.

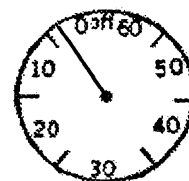
2.



LOW

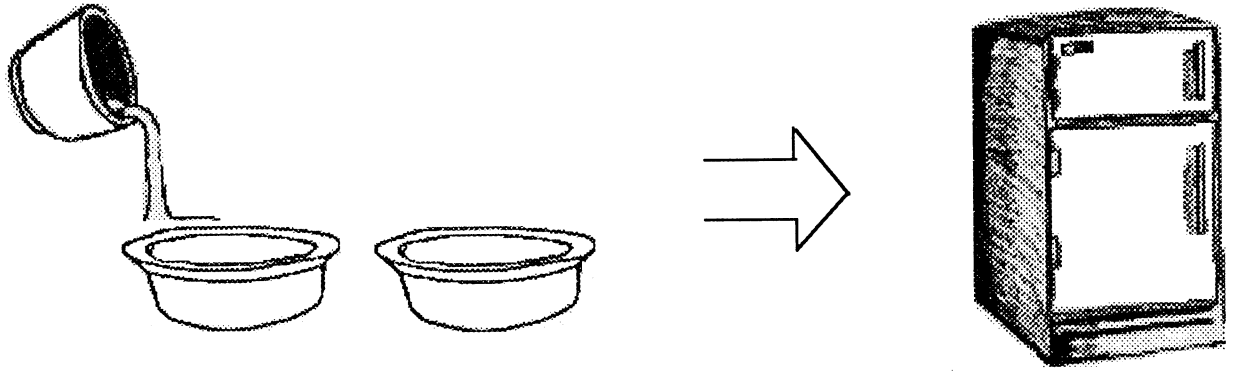


3 minutes



Using a handmixer, mix⁴⁸² on LOW speed for 3 minutes.

3.



Serve in bowls and chill in refrigerator until ready to serve.

INSTANT PUDDING

You Need:

1 cup milk
5 Tb. instant jello pudding mix (any flavor) (1/2 box)
liquid measuring cup
Tablespoon
metal spatula
handmixer
2 bowls
bowl
refrigerator

1. Measure 1 cup milk and 5 Tb. instant jello pudding mix. Put in bowl.
2. Using handmixer, mix on LOW speed for 3 minutes.
3. Serve in bowls and chill in refrigerator until ready to serve.