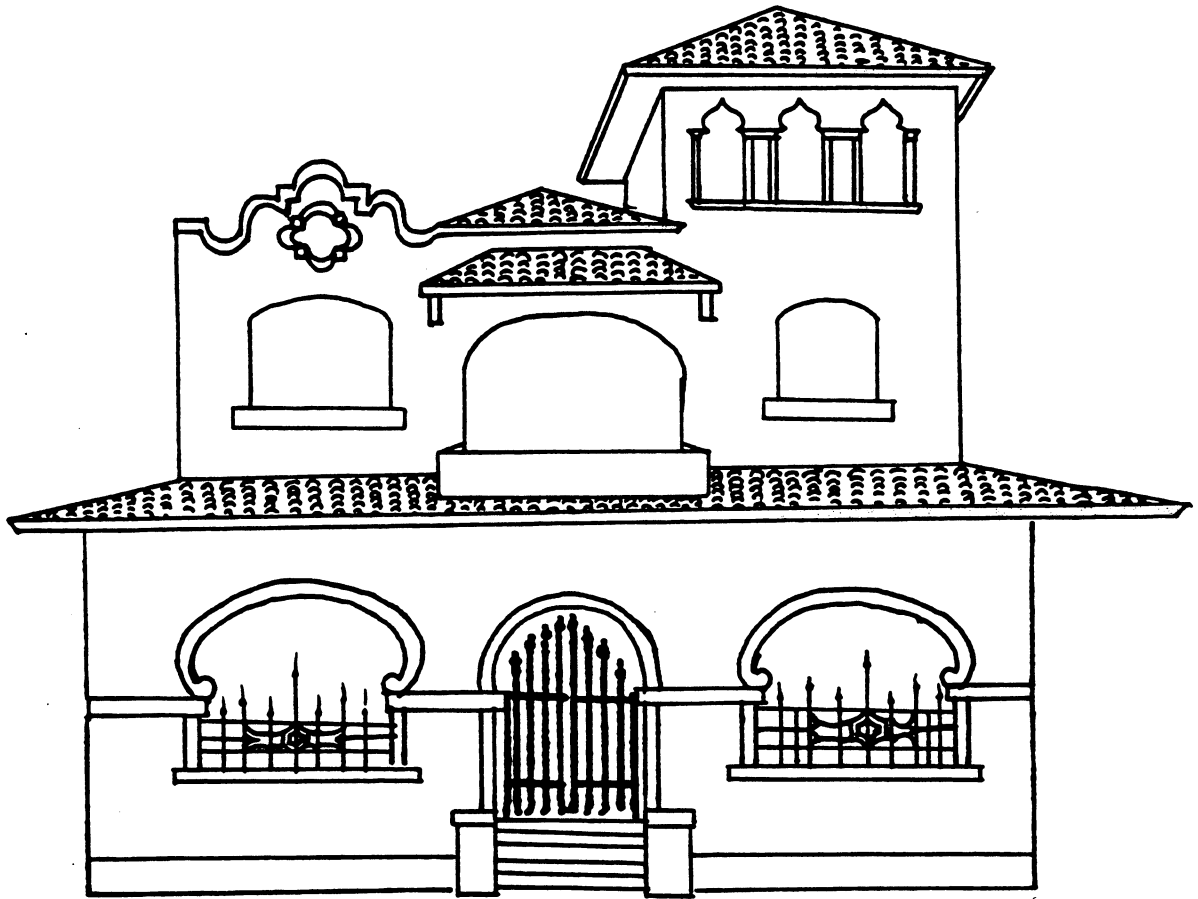


## SPANISH

- DATE LINE: 1500—1650
- MOTIFS: Clavated forms  
Geometric patterns (Islamic influence)
- ARCHITECTURE: Horseshoe arch  
Multi-foil or scalloped arch
- INTERIORS: Ceilings--beams and frescoed
- COLORS: Brilliant colors  
Black  
Red  
Gold
- TEXTILES: Leather  
Silk  
Velvet  
Damask
- FURNITURE: Vargueno (writing cabinet)  
Chairs  
Tables
- CHARACTERISTICS:  
Attention to strength rather than design  
Clavated turnings  
Splayed or slanting legs with metal stretchers  
Elaborate nail heads  
Wrought iron  
Trestle supports
- ASSIGNMENTS:  
1 chair tracing--Barcelona Chair  
1 current influence  
Recognize Horseshoe Arches
- REFERENCE: Interior Design and Decoration, pages 108—139

# SPANISH RENNAISANCE



## SPANISH BARCELONA CHAIR

