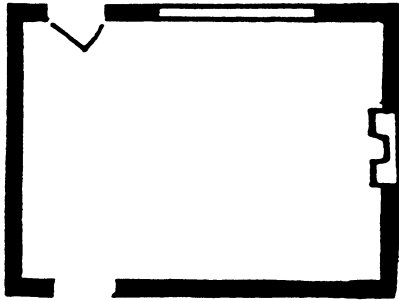
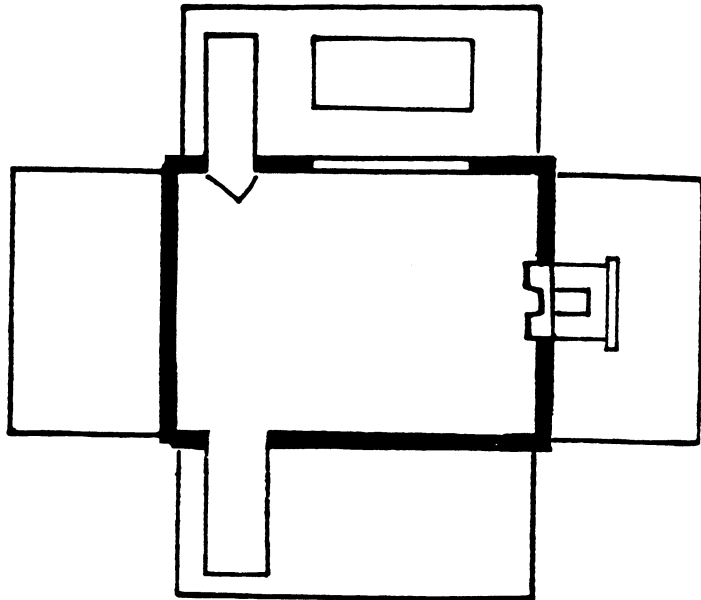


FLOOR PLAN AND ELEVATION ASSIGNMENT

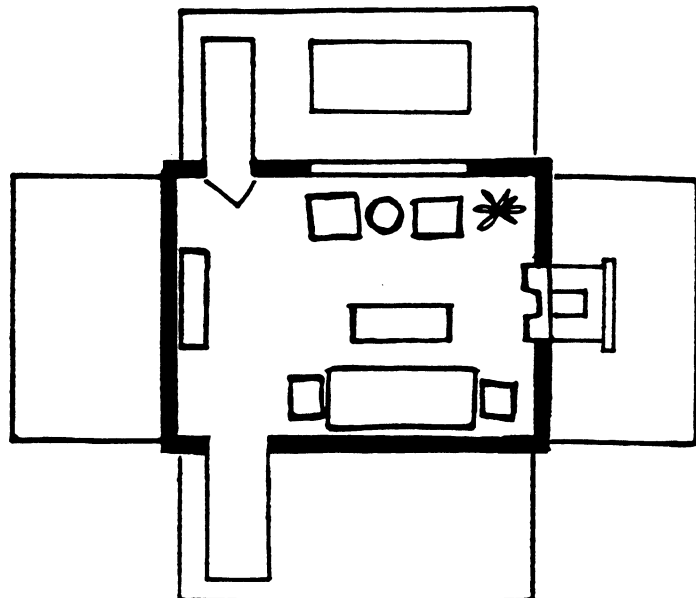
1. Draw the selected floor plan scale ($1/4" = 1'$). Indicate doors, windows, fireplaces and other architectural features.



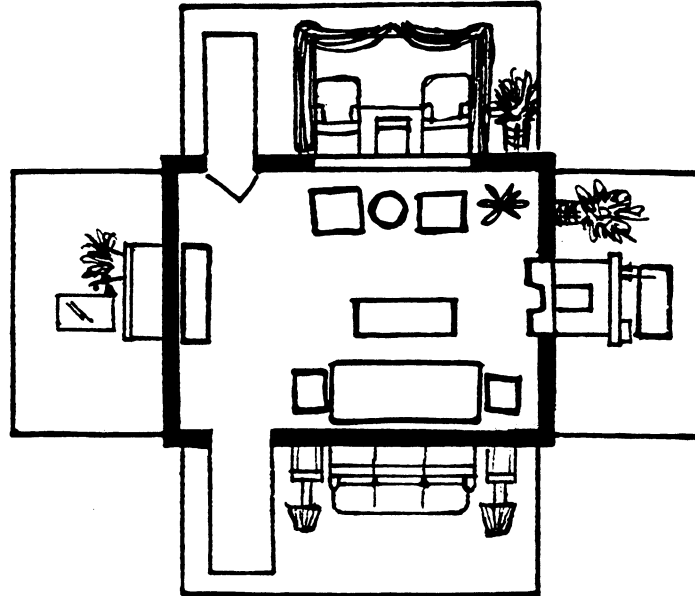
2. Draw the walls to scale.



3. Arrange furniture, using templates, on the floor plan. Remember to follow the guidelines for arranging furniture. Trace the furniture onto your plan--do not glue it on.



4. Draw the furniture on the wall to correspond with the floor plan. Add details such as window and wall coverings, accessories, etc.



5. Analyze your completed plan.
 - a. Does the room have a sense of equilibrium?
 - b. Does the room have a focal point or center of interest?
 - c. Is the furniture appropriate for the scale of the room?
 - d. Is there a good balance of high and low, angular and rounded furniture?
3. Did you allow for efficient traffic flow?