

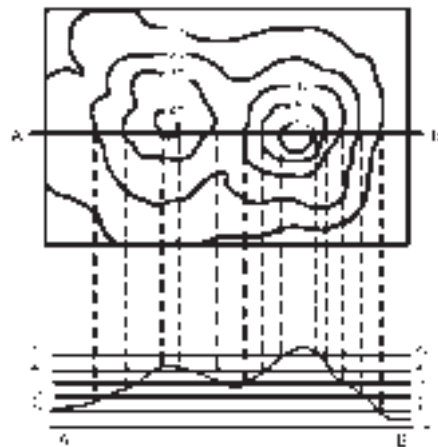
NAME _____

Topographical Map of Snowbasin

Snowbasin Ski Area is the venue for three skiing events: Downhill, combined downhill and super-G. Check out the topographical map of the Snowbasin Ski Area. You will see contour lines that show the shape and elevation of the land. They are sometimes called “level lines” because they show points that are at the same level. The closer together the contour lines appear on a topographic map, the steeper the slope.

HOW TO READ A TOPOGRAPHICAL MAP

The top of this drawing is a contour map showing the hills that are illustrated at the bottom.



- Which is higher, hill A or hill B? _____
- Which is steeper, hill A or hill B? _____
- How many feet of elevation are there between contour lines?

- How high is hill A? _____ hill B? _____

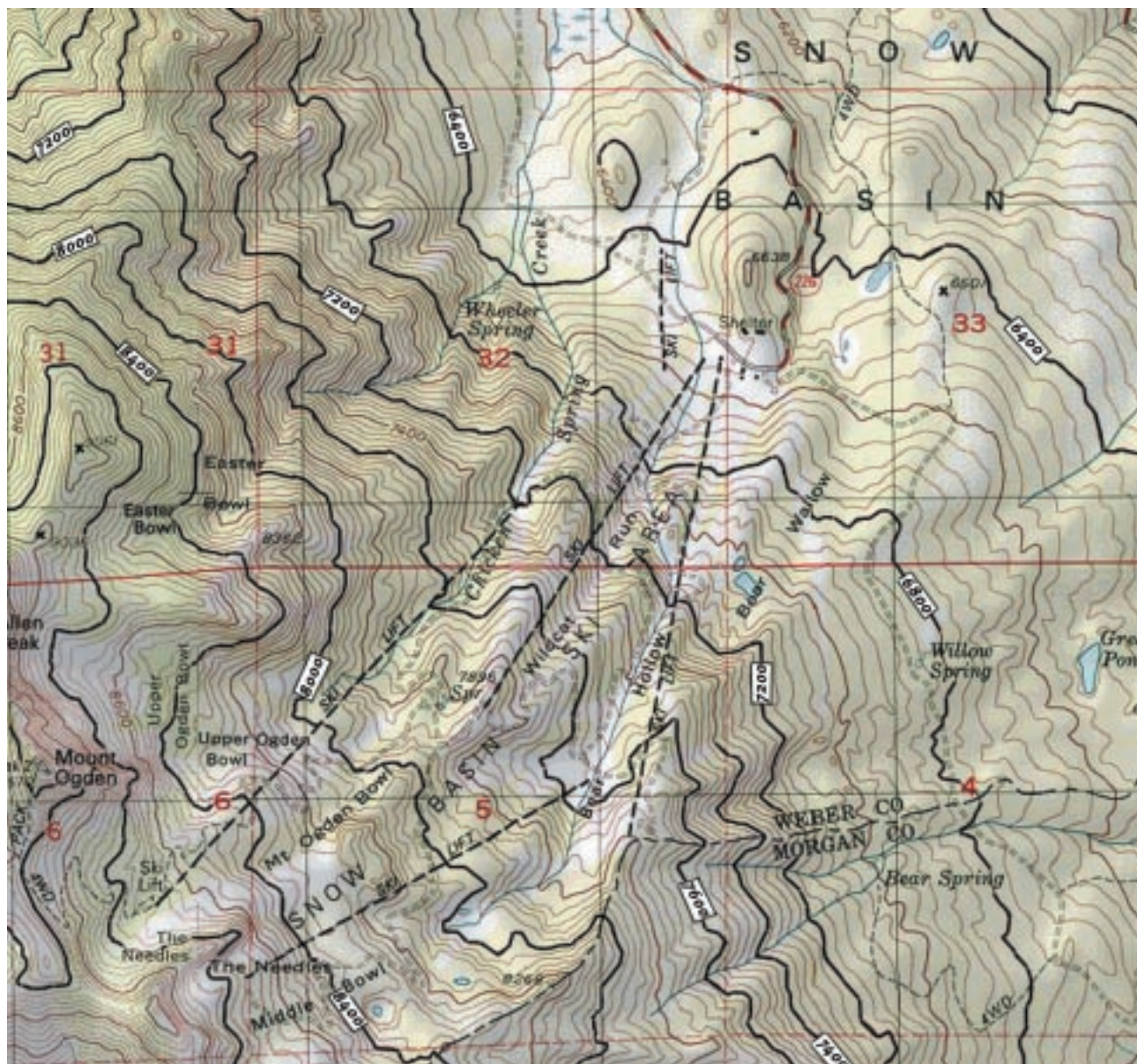
LOOK AT THE TOPOGRAPHICAL MAP OF SNOWBASIN ON THE NEXT PAGE TO ANSWER THE FOLLOWING QUESTIONS.

- How many feet are there between each major contour line? _____
- The bottom of the ski lifts (shelter) is between what two major contour lines?
- Which section of the Snowbasin map shows the steepest mountains?
a) northeast b) northwest c) southeast d) southwest
- Would you be walking uphill or downhill to go from the Easter Bowl to Wheeler Spring? _____
- Why do you think planners chose Snowbasin for the downhill skiing events?

Vocabulary

- CONTOUR LINE:** a line on a map, showing height above or below sea level.
- TOPOGRAPHICAL MAP:** a map that shows elevations as well as the positions of mountains, rivers, and other features, often in color and with contour lines.
- ELEVATION:** the height above sea level.

Topographical Map of Snowbasin



©U.S. Geological Survey