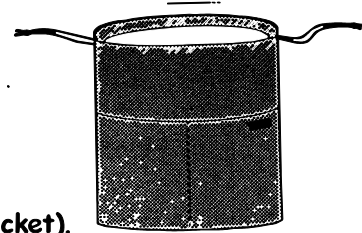
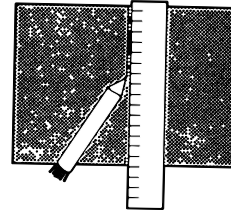


# Stuff Bag



- 1.. Cut two squares 14" X 17"(bag) and one 14" X 10" (pocket).

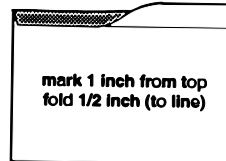
- 2. Find the center of the POCKET at the top and bottom.  
Note: You can easily find the center by folding the longest edges exactly in half.



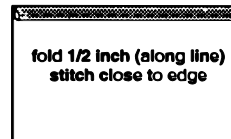
- Use chalk to mark the center on the right side of the fabric.
- Place a ruler between the lines and draw a straight line. This will show after construction, so be sure to sue a marker that will rub off.
- 3. Look at the pocket carefully to determine which edge is the top (depending on the print, it may not matter).

- Measure and draw a line on the WRONG side one inch from the top.

- Fold  $\frac{1}{2}$  inch of the top edge of the POCKET to the back side (fold to the line), and then turn again  $\frac{1}{2}$  inch (fold along the line) and pin.



- Stitch close to the edge.

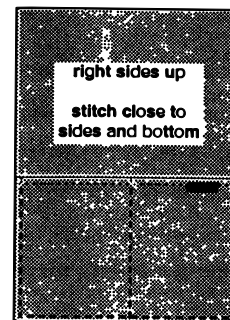


- 4. Pin the POCKET to the FRONT as follows:
  - right sides up
  - corners should match
  - bottom edges even
  - top of the pocket straight and even.

- Stitch close to the sides and bottom of the POCKET.

- Sew down the line you drew to divide the POCKET.

- 5. Draw a line 1  $\frac{3}{4}$ " from the bottom.  
Sew along the line you just drew.



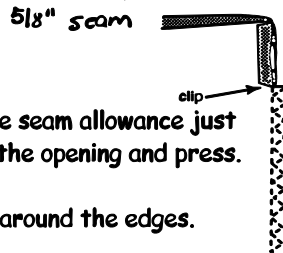
- 6. Pin the bag together along the long side edges, with right sides together.

- On one side edge, measure down  $\frac{3}{4}$  inch and mark with a pencil or chalk.

- Mark the other edge the same way.



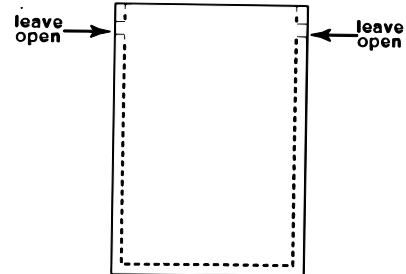
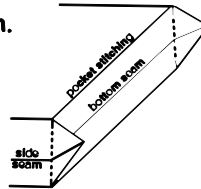
- Stitch from the top to your first line, backstitch. Start again at the second line and stitch around the bag to the bottom line on the other side, backstitch. Sew from the last line to the top.



- 7. Clip the seam allowance just above the opening and press.

- Serge around the edges.

- 8. Fold the corner so the side seams match. Stitch across the corner following your stitch and continuing on.

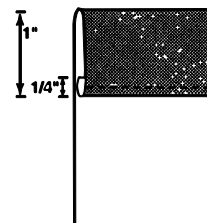
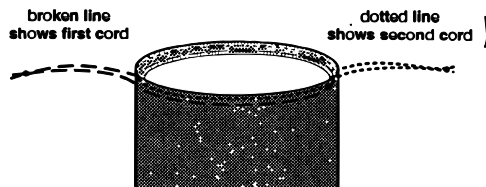


- 9. To make the top casing fold the top edge to wrong side  $\frac{1}{4}$  and then 1 inch.

- Pin and press and then sew close to the inner fold.

- Attach a safety pin to show pace and thread through entire casing. The cord will come out the same hole it went in. Do the same with other shoe lace going through the other hole.

- Tie the ends of each shoe lace together.



fold  $\frac{1}{4}$  inch and then 1 inch  
stitch  $\frac{1}{8}$  inch from inner fold

