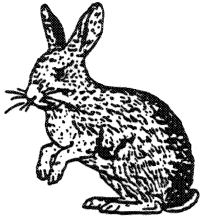


ORIENTAL ZODIAC

The Chinese Zodiac consists of a 12 year cycle, each year of which is named after a different animal that imparts distinct characteristics to its year. Many Chinese believe that the year of a person's birth is the primary factor in determining that person's personality traits, physical and mental attributes and degree of success and happiness throughout his lifetime. To learn about your Animal Sign, find the year of your birth among the 12 signs running around the border. If born before 1924 or after 1995, add or subtract 12 to find your year.



RABBIT

1927, 1939, 1951, 1963, 1975, 1987

Luckiest of all signs, you are also talented and articulate. Affectionate, yet shy, you seek peace throughout your life. Marry a Sheep or Boar. Your opposite is the Cock.



TIGER

1926, 1938, 1950, 1962, 1974, 1986

Tiger people are aggressive, courageous, candid and sensitive. Look to the Horse and Dog for happiness. Beware of the Monkey.



OX

1925, 1937, 1949, 1961, 1973, 1985

Bright, patient and inspiring to others. You can be happy by yourself, yet make an outstanding parent. Marry a Snake or Cock. The Sheep will bring trouble.



RAT

1924, 1936, 1948, 1960, 1972, 1984

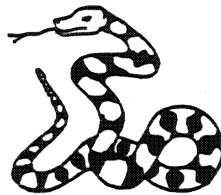
You are ambitious yet honest. Prone to spend freely. Seldom make lasting friendships. Most compatible with Dragons and Monkeys. Least compatible with Horses.



DRAGON

1928, 1940, 1952, 1964, 1976, 1988

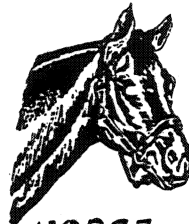
You are eccentric and your life complex. You have a very passionate nature and abundant health. Marry a Monkey or Rat late in life. Avoid the Dog.



SNAKE

1929, 1941, 1953, 1965, 1977, 1989

Wise and intense with a tendency towards physical beauty. Vain and high tempered. The Boar is your enemy. The Cock or Ox are your best signs.



HORSE

1930, 1942, 1954, 1966, 1978, 1990

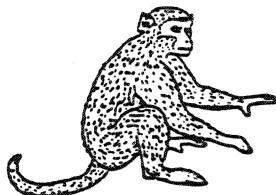
Popular and attractive to the opposite sex. You are often ostentatious and impatient. You need people. Marry a Tiger or a Dog early, but never a Rat.



SHEEP

1931, 1943, 1955, 1967, 1979, 1991

Elegant and creative, you are timid and prefer anonymity. You are most compatible with Boars and Rabbits but never the Ox.



MONKEY

1932, 1944, 1956, 1968, 1980, 1992

You are very intelligent and are able to influence people. An enthusiastic achiever, you are easily discouraged and confused. Avoid Tigers. Seek a Dragon or a Rat.



COCK

1933, 1945, 1957, 1969, 1981, 1993

A pioneer in spirit, you are devoted to work and quest after knowledge. You are selfish and eccentric. Rabbits are trouble. Snakes and Oxen are fine.



DOG

1934, 1946, 1958, 1970, 1982, 1994

Loyal and honest you work well with others. Generous yet stubborn and often selfish. Look to the Horse or Tiger. Watch out for Dragons.



BOAR

1935, 1947, 1959, 1971, 1983, 1995

Nobel and chivalrous. Your friends will be lifelong, yet you are prone to marital strife. Avoid other Boars. Marry a Rabbit or a Sheep.